



## **ANNUAL REPORT 2016-17**



*Our Past, Our Present  
ECU's Future*



# BIGGER THAN YOU THINK

The ECU Foundation, Inc.  
helps more students than  
ever earn degrees at ECU.

**538**

Scholarship  
Recipients

**2,121**

Total Number  
of Donors

**3,481**

Total Number  
of Donations

**\$516,000**

Scholarship  
Money  
Awarded

**\$2,743,988**

Total Donations

# ECU FOUNDATION, INC.

## STATEMENTS OF FINANCIAL POSITION

<i>June 30,</i>	<i>2017</i>	<i>2016</i>
<b>Assets</b>		
Current assets:		
Cash and cash equivalents	\$ 1,701,974	1,194,431
Pledges receivable	2,121,735	1,933,880
Interest receivable	47,455	41,905
Certificates of deposit	402,074	136,470
Total current assets	<u>4,273,238</u>	<u>3,306,686</u>
Non-current assets:		
Investments, at fair value	27,800,510	24,786,947
Certificates of deposit, net of current portion	-	259,302
Real estate held as investments	17,500	17,500
Artwork	329,686	329,686
Furniture and equipment, net	2,030	6,895
Other assets	27,824	110,430
Total non-current assets	<u>28,177,550</u>	<u>25,510,760</u>
Total assets	<u>\$ 32,450,788</u>	<u>28,817,446</u>
<b>Liabilities and Net Assets</b>		
Current liabilities:		
Accounts payable	\$ -	4,378
Accrued payroll	-	9,100
Total current liabilities	<u>-</u>	<u>13,478</u>
Net assets:		
Unrestricted	976,331	615,025
Temporarily restricted	11,328,785	8,998,441
Permanently restricted	20,145,672	19,190,502
Total net assets	<u>32,450,788</u>	<u>28,803,968</u>
Total current liabilities and net assets	<u>\$ 32,450,788</u>	<u>28,817,446</u>

# ECU FOUNDATION, INC.

## STATEMENTS OF ACTIVITIES

*Year Ended June 30, 2017*

	<u>Unrestricted</u>	<u>Temporarily Restricted</u>	<u>Permanently Restricted</u>	<u>Total</u>
<b>Revenues:</b>				
<b>Contributions:</b>				
Private gifts and grants	\$ 6,203	2,223,326	926,506	3,156,035
Total contributions	<u>6,203</u>	<u>2,223,326</u>	<u>926,506</u>	<u>3,156,035</u>
<b>Investment income:</b>				
Interest and dividends	154,314	462,942	-	617,256
Net investment gains	599,355	1,798,065	-	2,397,420
Total investment income	<u>753,669</u>	<u>2,261,007</u>	<u>-</u>	<u>3,014,676</u>
Other revenues	<u>69</u>	<u>22,550</u>	<u>28,664</u>	<u>51,283</u>
Net assets released from restrictions	<u>2,174,339</u>	<u>(2,174,339)</u>	<u>-</u>	<u>-</u>
Total revenues	<u>2,934,280</u>	<u>2,332,544</u>	<u>955,170</u>	<u>6,221,994</u>
<b>Expenses:</b>				
<b><u>Programs for the University</u></b>				
Scholarship awards	577,870	-	-	577,870
General University educational assistance	1,376,166	-	-	1,376,166
Salary supplements	163,782	-	-	163,782
<b><u>Management and Operating</u></b>				
Operating expenses	452,491	-	-	452,491
Depreciation	4,865	-	-	4,865
Total expenses	<u>2,575,174</u>	<u>-</u>	<u>-</u>	<u>2,575,174</u>
Transfer from (to) other net assets	<u>2,200</u>	<u>(2,200)</u>	<u>-</u>	<u>-</u>
Increase in net assets	361,306	2,330,344	955,170	3,646,820
Net assets at beginning of year	<u>615,025</u>	<u>8,998,441</u>	<u>19,190,502</u>	<u>28,803,968</u>
Net assets at end of year	<u>\$ 976,331</u>	<u>11,328,785</u>	<u>20,145,672</u>	<u>32,450,788</u>



# ECU FOUNDATION, INC.

## STATEMENTS OF ACTIVITIES, CONT.

### YEAR ENDED JUNE 30, 2016

*Year Ended June 30, 2016*

	<u>Unrestricted</u>	<u>Temporarily Restricted</u>	<u>Permanently Restricted</u>	<u>Total</u>
Revenues:				
Contributions:				
Private gifts and grants	\$ 92,558	2,740,238	328,665	3,161,461
Total contributions	<u>92,558</u>	<u>2,740,238</u>	<u>328,665</u>	<u>3,161,461</u>
Investment income:				
Interest and dividends	145,680	433,305	-	578,985
Net investment losses	<u>(108,988)</u>	<u>(326,965)</u>	<u>-</u>	<u>(435,953)</u>
Total investment income	<u>36,692</u>	<u>106,340</u>	<u>-</u>	<u>143,032</u>
Other revenues:				
Gain on sale of land	-	-	61,578	61,578
Other	<u>-</u>	<u>62</u>	<u>7,692</u>	<u>7,754</u>
Total other revenues	<u>-</u>	<u>62</u>	<u>69,270</u>	<u>69,332</u>
Net assets released from restrictions	<u>2,316,264</u>	<u>(2,316,264)</u>	<u>-</u>	<u>-</u>
Total revenues	<u>2,445,514</u>	<u>530,376</u>	<u>397,935</u>	<u>3,373,825</u>
Expenses:				
<u>Programs for the University</u>				
Scholarship awards	553,267	-	-	553,267
General University educational assistance	2,112,638	-	-	2,112,638
Salary supplements	184,063	-	-	184,063
<u>Management and Operating</u>				
Operating expenses	398,665	-	-	398,665
Depreciation	<u>5,245</u>	<u>-</u>	<u>-</u>	<u>5,245</u>
Total expenses	<u>3,253,878</u>	<u>-</u>	<u>-</u>	<u>3,253,878</u>
Transfer (to) from other net assets	<u>(154,413)</u>	<u>(18,967)</u>	<u>173,380</u>	<u>-</u>
(Decrease) increase in net assets	(962,777)	511,409	571,315	119,947
Net assets at beginning of year, as restated	<u>1,577,802</u>	<u>8,487,032</u>	<u>18,619,187</u>	<u>28,684,021</u>
Net assets at end of year	<u>\$ 615,025</u>	<u>8,998,441</u>	<u>19,190,502</u>	<u>28,803,968</u>

# Donors Give to the Foundation

## For many different reasons

*Some want to repay the investment that others made in them. Some want to give a gift that adds value to the University, and that also brings deeper meaning to their lives. Some simply want to support the ECU family and make a positive impact on faculty, staff and students of the future. Whatever the reason, donor gifts are important to the Foundation and to the University, and we want to make sure that you are aware of all of the different ways that you can donate.*

*The Foundation will accept any level of gift, and in all cases, the wishes of the donor will be the guiding principal as to how the funds are used. Donors frequently specify an endowed scholarship, academic department fund, endowed lectureship/professorship/chair or capital improvement project as the target of their benevolence.*

*The Foundation encourages you to discuss the various methods of giving with your accountant and/or attorney in order to select the giving mechanism which best fits your circumstances. Flexible options allow you to demonstrate your commitment and maximize your support of the University's mission.*

### **The most common types of gifts are:**

#### **1 GIFTS OF CASH, CHECK, OR CREDIT CARD**

These gifts are always welcome because they are available immediately to strengthen the Foundation and the University or begin earning income for the future.

#### **2 GIFTS OF SECURITIES**

These gifts include stocks, bonds, mutual funds and IRAs, and are also available immediately to impact the work of the Foundation.

#### **3 GIFTS OF PERSONAL PROPERTY**

Personal property can include coin collections, antique cars, gun collections, artwork, musical instruments, etc.

#### **4 GIFTS OF REAL PROPERTY**

Real estate, homes, business property and farmland that have grown in value can result in capital gains taxes if sold, or tax advantages are available through a charitable gift to the Foundation. When the Foundation acquires your gift of appreciated stock or property, you receive a tax deduction equal to its fair market value and also avoid costly capital gains tax on the increase in value.

#### **5 GIFTS-IN-KIND**

Donations of software, licenses, services, vendor products, and other property also support the mission and programs of ECU. These gifts-in-kind allow the Foundation to use our resources for other needs while you get credit for your support.

#### **6 GIFTS OF TRUSTS**

This can include charitable remainder trusts, unitrusts, lead trusts, family trusts, annuity trusts, etc., that can avoid capital gains taxes and provide an annual income for life.

#### **7 GIFTS OF INSURANCE**

Naming the Foundation as the owner and beneficiary of your life insurance policy is also an option, especially when your policy has a face amount that is much greater than the amount you could afford to give in cash. By assigning ownership to the Foundation and making the Foundation the beneficiary of an old policy that is no longer needed for its original purpose, such as sheltering children's education, you can make a substantial gift at a low cost and take an immediate income tax deduction for the cash value of the policy. You can then contribute an amount equal to the policy's premiums to the Foundation and deduct that gift as a charitable contribution. Proceeds of the policy will pass to the Foundation free of estate taxes. New policies may also be obtained listing the Foundation as the owner and/or beneficiary as a part of financial or estate planning.

#### **8 DO YOU WORK FOR A MATCHING ORGANIZATION?**

Many organizations will match your donation, some up to 150%! Thanks to the following business and organizations for encouraging their employees to show a benevolent spirit:

OG&E  
Apache Corporation  
TIAA  
AT&T  
LPL Financial  
Deloitte  
JP Morgan Chase  
KPMG Foundation  
Exelon Foundation

YourCause  
Devon Energy  
Microsoft  
NetApp  
Mustang Fuel  
Noble Foundation  
Wells Fargo  
Network for Good  
Raytheon



# SCHOLARSHIPS

Each year the ECU Foundation gives hundreds of scholarships to deserving students at East Central University. These scholarships are made possible by generous donors to the university.

## 1950s SCIENCE FUND

*Biology, Chemistry/Physics,  
Math/Computer Science*

This scholarship will be awarded to a junior or senior biology student who has maintained a minimum 2.75 GPA. Preference will be given to students who do not qualify for significant federal financial aid. This scholarship was established by an anonymous ECU alumnus who attended medical school, and who wanted to assist students who were interested in furthering their education.

## A SERVANT'S HEART SACRED MUSIC SCHOLARSHIP

*Music*

This scholarship will be awarded to a senior majoring in Sacred Music who has maintained a minimum 2.5 GPA. If there

is no eligible candidate the department may select a sophomore, junior or graduate student. The recipient must be a current member of a Christ-centered church. This scholarship is for one semester only and the recipient will be selected by the department and others deemed necessary by A Servant's Heart Ministry. This scholarship was established by the members of the gospel ministry group "A Servant's Heart" of Ada, OK. This fund is intended to help those persons who aspire to serve our Lord and Savior Jesus Christ through a church-related vocation, and who have a genuine need for additional financial assistance.

## ACCOUNTING DEPARTMENT SCHOLARSHIP

*Accounting*

This scholarship will be awarded to students who have completed at least nine hours of accounting courses and have met one of the following GPA criteria: 2.7 cumulative GPA; a 3.0 GPA for the last 24 hours; a 3.5 GPA the last semester; or a 3.0 GPA in their major.

## CHARLES & LILA ACKER CENTENNIAL COMPUTER SCIENCE ENDOWMENT

*Math/Computer Science*

This scholarship will be awarded to a junior or senior level student majoring in computer science, with preference given to a student with financial need to complete their degree, as selected by ECU's Computer Science Department. Charles and Lila Acker, both ECU graduates, are generous donors to the ECU Foundation.

## CHARLES & LILA ACKER CENTENNIAL MATH ENDOWMENT

*Math/Computer Science*

This scholarship will be awarded to an outstanding student majoring in math as selected by ECU's Math Department.

Charles and Lila Acker, both ECU graduates and math majors, have established this scholarship to encourage students who are planning to major in math.

## ADA COCA-COLA BUSINESS SCHOLARSHIP

*Accounting, Business Administration*

This scholarship will be awarded at the discretion of the department, and was established by the Crabtree Family of Ada.

## ADA ELKS LODGE SCHOLARSHIP

*Other*

This scholarship will be awarded to area students at the discretion of the Ada Elks Lodge.

## ADA HIGH CLASS OF 1948

*Incoming Freshmen*

This scholarship will be awarded to an Ada High School senior who ranks closest to "48th" in the graduating class and who plans to attend ECU. This scholarship was established by Ada High School alumni from the 1948 graduating class.

## ADA HIGH CLASS OF 1950

*Incoming Freshmen*

This scholarship will be awarded to an Ada High School senior who ranks closest to "50th" in the graduating class and who plans to attend ECU. This scholarship was established by Ada High School alumni from the 1950 graduating class.

## ADA HIGH CLASS OF 1951

*Incoming Freshmen*

This scholarship will be awarded to an Ada High School senior who plans to attend ECU. This scholarship was established by Ada High School alumni from the 1951 graduating class.



As a non-traditional student with a family to help support, this benefits my whole family. My goal is to use this scholarship and continue to work hard while dedicating myself to being the best student I can be.

Kelley Gutierrez  
Stratford, Okla  
Human Resources

### ADA HIGH CLASS OF 1970

#### *Incoming Freshmen*

This scholarship will be awarded to a student from Ada High School who plans to attend ECU, and the selection will be at the discretion of the counselor or principal. This scholarship was established by Ada High School alumni from the 1970 graduating class.

### ADA HIGH CLASS of 1975

#### *- Paying It Forward*

#### *Incoming Freshmen*

This scholarship will be awarded to an Ada High School senior who will be attending East Central University. The recipient will be selected by Ada High School administrators.

### ADA LIONS CLUB SCHOLARSHIP

#### *Other*

This scholarship will be awarded at the discretion of the Ada Lions Club.

### ADA ROTARY CLUB SCHOLARSHIP

#### *Other*

This scholarship will be awarded at the discretion of the Ada Rotary Club.

### ADA SUNRISE ROTARY CLUB / ELIZABETH SCHMELLING INTERNATIONAL STUDENT AWARD

#### *Other*

This scholarship will be awarded at the discretion of the Ada Sunrise Rotary Club.

### GARY & LINDA AINSWORTH CENTENNIAL RUSSIA TRAVEL ENDOWMENT

#### *Global Education*

This scholarship will be awarded to assist students who travel to Russia, and was established by Linda Ainsworth in memory of her husband Gary.

### WENDELL ALTMILLER SCHOLARSHIP

#### *Education*

This scholarship will be awarded to a senior majoring in elementary education with a minimum 3.0 GPA. Dr. Altmiller was a long-time ECU faculty member and Dean of the College of Education. This scholarship was established in his honor by family, friends and colleagues.

### DUANE C. & MARIAN L. ANDERSON CENTENNIAL HISTORY ENDOWMENT

#### *History*

This scholarship will be awarded to an upperclassmen majoring in history who plans to attend graduate school. Dr. Anderson served as Vice-President for Academic Affairs and Provost of ECU for several years, and his wife Marian was also a longtime employee. This scholarship was established in their honor by family, friends, and colleagues.

### FERN ANDERSON MEMORIAL SCHOLARSHIP

#### *Education*

This scholarship will be awarded to a student majoring in elementary education with a minimum 3.0 GPA. Established by her niece Dr. Louise Young, this scholarship is awarded to an outstanding student majoring in elementary education.

### JERRY ANDERSON CENTENNIAL MEMORIAL ATHLETIC ENDOWMENT

#### *Kinesiology*

This scholarship will be awarded to an upper-level kinesiology student who has maintained at least a 2.5 cumulative GPA. Mr. Anderson was a longtime basketball coach at ECU, and

this scholarship has been established in his memory by family, friends and colleagues.

### JON ARRASMITH CENTENNIAL MEMORIAL ENDOWMENT

#### *Criminal Justice, Phi Tau*

This scholarship will be awarded to a student majoring in criminal justice or related field. Preference will be given to a current member of the Phi Kappa Tau fraternity. A minimum 2.5 GPA is required. This scholarship was established by Gil and Jeanine Morgan, longtime supporters of ECU and family members of Jon Arrasmith.

### ARTISTS ASSOCIATION / LORETTA YIN CENTENNIAL ENDOWMENT

#### *Art*

This scholarship will be awarded to an upper-level student who is majoring in art. The funds for this scholarship were obtained by proceeds from art shows, and is in special honor of Loretta Yin, a local artist.

### CARL BARDIN CENTENNIAL ACCOUNTING ENDOWMENT

#### *Accounting*

This scholarship will be awarded to an accounting major at the discretion of the department. Mr. Bardin was a longtime faculty member at ECU, and this scholarship was established by his family and friends after his death.

### ALBERT BARE MEMORIAL SCHOLARSHIP

#### *Incoming Freshmen*

This scholarship will be awarded to an Ada High School student who plans to attend ECU, who plans to major in education, who has an above-average GPA, and who comes from a middle-income family. Mr. Bare was a longtime teacher and administrator in the Ada School system, and this scholarship was established in his memory by family and friends. The recipient will be selected by Ada High School administrators.

### DR. CHARLES BARRICK IN MEMORY OF J.D. HANEY SCHOLARSHIP

#### *Nursing*

This scholarship will be awarded at the discretion of the department. Dr. Barrick established this scholarship in memory of



his good friend, J.D. Haney, after Mr. Haney's death.

### **DR. RICHARD BAUMGARTNER MEMORIAL SCHOLARSHIP (GRADUATE)**

#### *Human Resources*

This scholarship will be awarded to a graduate student who has completed at least 9 hours in the MSHR program and has maintained a minimum 3.0 GPA. Dr. Baumgartner was a long-time faculty member in the Human Resources Department, and this scholarship was established in his memory by family, friends, and colleagues.

### **DR. RICHARD BAUMGARTNER MEMORIAL SCHOLARSHIP (UNDERGRADUATE)**

#### *Human Resources*

This scholarship will be awarded to a junior or senior student who has maintained a minimum 3.0 GPA, who has exhibited leadership qualities, and who shows the potential to make a positive and lasting impact in the human resources profession. Dr. Baumgartner was a long-time faculty member in the Human Resources Department, and this scholarship was established in his memory by family, friends, and colleagues.

### **SHELBY JANE BAYS MEMORIAL SCHOLARSHIP**

#### *Biology*

This scholarship will be awarded at the discretion of the department. Shelby Bays was a pre-dental student attending ECU at the time of her death. Her parents established this scholarship in her memory in order to assist other students in reaching their career goals.

### **FRANK P. BECK ENVIRONMENTAL SCIENCE ENDOWMENT**

#### *Environmental Science*

This scholarship will be awarded to an outstanding graduate or undergraduate student in Environmental Health Science or related degree program. The recipient must maintain a GPA of 3.0 or above and attend ECU as a full-time student. The recipient will be chosen each year by the Robert S. Kerr Chair or their designee.

### **BOB BENNETT CENTENNIAL FINE ARTS ENDOWMENT**

#### *Music*

This scholarship will be awarded to a junior or senior student majoring in instrumental music. This scholarship was established by Sally Bennett in memory of her husband, Bob Bennett, who was a local attorney and an accomplished musician.

### **BKD ACCOUNTING EDUCATION FUND**

#### *Accounting*

The purpose of this scholarship is to provide scholarships to accounting students and any other programs as designated by BKD, LLP. Donations to this fund have been made available by the BKD Faculty Salary Endowment and annual gifts from BKD partners and employees.

### **DONALD & BETTIE BLACK FOUNDATION AWARD**

#### *Mass Communication*

This scholarship will be awarded at the discretion of the department. The Blacks are both ECU alumni who have established this scholarship in order to reward excellence in the area of mass communication.

### **ELIZABETH BLAKESLEY SCHOLARSHIP**

#### *Art, Communication/Performance Studies,*

#### *Music*

This scholarship will be awarded to an incoming freshman who has declared art as a major with a minimum 25 ACT score, and who has supplied one letter of recommendation, an essay, and a portfolio of at least 10 works. Ms. Blakesley was a long-time resident of Ada, and a generous supporter of ECU students.

### **LEE BLANEY DRAMA AWARD**

#### *Communication/Performance Studies*

This scholarship will be awarded to a drama student majoring in theatre. Mr. Blaney was an ECU alumnus who died in a tragic accident. This scholarship was established by family and friends in his memory.

### **DENNIS BOE CENTENNIAL PIANO ENDOWMENT**

#### *Music*

This scholarship will be awarded to a student who is enrolled in private piano study (applied piano) and who has maintained a

minimum 3.0 GPA. This scholarship was established by friends and family of Dr. Boe, who was a longtime member of the ECU faculty and an accomplished pianist.

### **DR. PALMER BOEGER HISTORY SCHOLARSHIP**

#### *History*

This scholarship will be awarded at the discretion of the History Department. Dr. Boeger taught at ECU from 1969-1993. This scholarship was established in his honor and memory by friends, family and colleagues.

### **JOHN & RUTH BOONE SCHOLARSHIP**

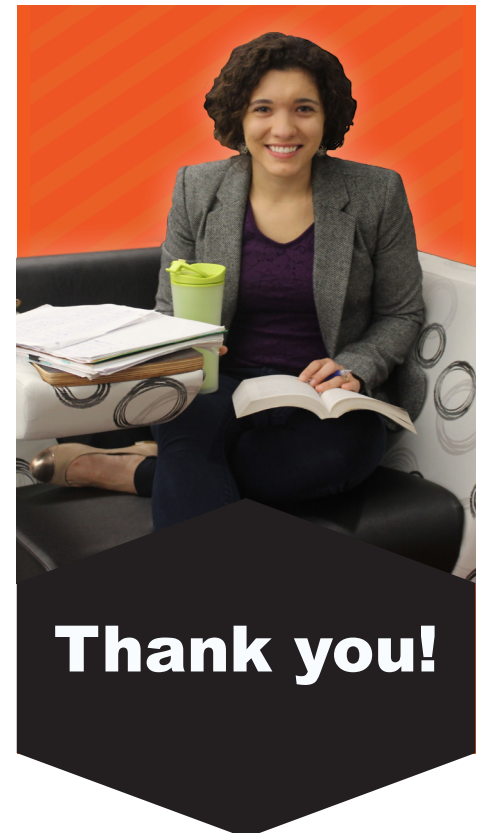
#### *Education*

This scholarship will be awarded to a student from Ada High School who is majoring in education, who plans to teach in the public school system and has maintained a minimum 3.0 GPA.

### **MOLLY SHI BOREN CENTENNIAL ENGLISH ENDOWMENT**

#### *English/Languages*

This scholarship will be awarded to an incoming freshman who plans to major in English and who exhibits financial need. The scholarship may be continued if a minimum 2.0 GPA is maintained. Mrs. Boren taught at ECU for several years, and her husband,



# Thank you!

Governor David Boren, established this scholarship in her honor.

### **E.O. BOX MATH AWARD**

#### *Math/Computer Science*

This scholarship will be awarded to the senior mathematics student who has maintained the highest GPA over the course of his/her college career. This fund was established by Mr. Box's wife Emma in his memory.

### **EMMA BOX**

### **VISUAL ARTS SCHOLARSHIP**

#### *Art*

This scholarship will be awarded to a student majoring in art. Ms. Box was a former instructor in the Art Department, and this scholarship was established in her memory by students and colleagues.

### **BRIDGES-BURKE**

### **CENTENNIAL SOCIAL WORK ENDOWMENT**

#### *Human Resources*

This scholarship will be awarded to a junior or senior student in the social work program who has maintained a minimum 3.0 GPA. Applicants must have completed at least 12 hours in this program for consideration. Both Dr. Bridges and Dr. Burke are longtime members of the ECU faculty, and this scholarship has been established by friends, former students, and colleagues to honor their dedication to teaching.

### **BRILES SCHOLARSHIP**

#### *All Departments*

This scholarship will be awarded based on need and a minimum 2.5 GPA. Originally established as a part of the Federal Student Loan Program, this scholarship was transferred to the ECU Foundation in 1995.

### **BROOKS, DR. EDWARD SCHOLARSHIP**

#### *Political Science/Legal Studies*

This scholarship will be awarded to a student who has chosen legal studies as a major and who has maintained academic excellence in his/her college career. Dr. Brooks taught government at ECU for several years and this scholarship was established in his memory by a former student, Kelvin Williams.

### **DR. JOHN BULMAN CENTENNIAL ENDOWMENT**

#### *Chemistry/Physics*

This scholarship will be awarded at the

discretion of the Physics Department. Dr. Bulman was a longtime faculty member and administrator at ECU and this scholarship was established in his honor and memory by family, friends and colleagues.

### **MAY SANDERS BURNS SCHOLARSHIP**

#### *English/Languages*

This scholarship will be awarded to a freshman who plans to major in English, and who has a cumulative GPA of 2.5 or above. The recipient will be chosen based on need and the inability to qualify for any other scholarship assistance. This scholarship was endowed by Mrs. Anita Floyd of Ada, Ms. Burns' niece.

### **COLTON CALAWAY MEMORIAL SCHOLARSHIP**

#### *Incoming Freshmen*

This scholarship was established by friends and family of Colton Calaway a 2009 graduate of Ada High and a former ECU student. Colton was an outstanding performer in the classroom and in athletics, winning state runner-up in tennis his junior year. The recipient will be selected by Ada High School administrators.

### **DONNA CALLISON MEMORIAL SCHOLARSHIP**

#### *Mass Communication*

This scholarship will be awarded at the discretion of the Mass Communication Department. The family of Donna Callison established this scholarship in her memory.

### **CARLOCK SCHOLARSHIP**

#### *Biology*

This scholarship will be awarded to students who are majoring in a health- or hospital-related field. Applicants are required to have a minimum 2.5 GPA, and must have established a permanent residence in Carter, Love, Marshall, Murray or Jefferson County.

### **JUDY CARROLL CENTENNIAL MEMORIAL ENGLISH ENDOWMENT**

#### *English/Languages*

This scholarship will be awarded to an English major who is a sophomore or above and who has maintained a minimum 3.0 GPA. Mrs. Carroll was a longtime educator and counselor in the Ada area, and this scholarship was established in her memory by family, friends and colleagues.

### **CEA CHEERLEADER SCHOLARSHIP**

#### *Athletics*

This scholarship will be awarded to a student who has been a CEA cheerleader for at least one full calendar year, in good standing with the CEA organization. The student must be on the cheer team for CEA during his/her senior year of high school and must be accepted to ECU for the fall semester in which the scholarship is awarded. The student must try out and be selected for the East Central University Cheerleading squad per their regulations and maintain a 3.5 GPA or above. The recipient will be selected by the CEA Scholarship Committee or its official designee.

### **CENTENNIAL ATHLETIC ENDOWMENT**

#### *Athletics*

This scholarship was established in 2009, ECU's Centennial Year by Dr. Ronald and Estelle Evans and will be awarded at the discretion of the Athletics Department.

### **AUDRE CHAPMAN SCHOLARSHIP**

#### *Education*

This scholarship will be awarded at the discretion of the Education Department. Ms. Chapman attended ECU January 1927 – May 1928, and received a life teaching certificate. She taught in both Oklahoma and Arizona for several years. This scholarship was established in 1986 with a \$10,000 donation from her family and she established several scholarships at the University of Arizona.

### **WILLIAM CHAPMAN CENTENNIAL ACCOUNTING ENDOWMENT**

#### *Accounting*

This scholarship will be awarded to a senior-level accounting student who has maintained a minimum cumulative 3.0 GPA, and a minimum 3.5 GPA in accounting. This award was originated by Mr. and Mrs. Oscar Parker in honor of Dr. William Chapman, longtime faculty member in the Accounting Department.

### **CHEMISTRY SCHOLARSHIP**

#### *Chemistry/Physics*

This scholarship will be awarded at the discretion of the chemistry department.



**CITIZENS BANK OF ADA  
BUSINESS ADMINISTRATION  
AWARD**

*Business Administration*

This scholarship will be awarded at the discretion of the Business Administration Department.

**CITIZENS BANK / OBW  
CENTENNIAL ENDOWMENT**

*Business Administration*

This scholarship will be awarded to a business administration student, with preference to a student who has attended Oklahoma Business Week.

**DR. JAMES CLARK SCHOLARSHIP**

*Biology*

This scholarship will be awarded at the discretion of the Biology Department. Dr. Clark is an ECU alumnus and was a dentist in Ada.

**HENRY GREER CLARK  
BUSINESS ADMINISTRATION  
MEMORIAL SCHOLARSHIP**

*Business Administration*

This scholarship will be awarded at the discretion of the Business Administration Department. Longtime Ada businessman Martin H. Clark and his wife Lenora Agee Clark established this scholarship to assist students with their educational expenses. Martin and Lenora met at the BSU the first day she arrived at ECU and their children and grandchildren also attended ECU.

**CLAWSON, DON & ETHEL  
SCHOLARSHIP**

*Education*

This scholarship will be awarded to an upperclassman who has been admitted to the Teacher Education Program and who has maintained a minimum 3.0 GPA. Both of the Clawsons attended ECU and they established this scholarship to assist students who plan to enter the teaching profession.

**DR. TERRY W. CLUCK  
CENTENNIAL TRI-BETA BIOLOGY  
ENDOWMENT**

*Biology*

This scholarship will be awarded to a student majoring in biology who has maintained a cumulative GPA of 3.2 or higher. The recipient must also be an active member or officer of Tri-Beta. Preference will be given to those who are research participants. This scholarship was established by an anonymous donor in honor of Dr. Cluck for his service to the university and the biology department.

**WAYNE COBB SCHOLARSHIP**

*Foundation*

This scholarship will be awarded to a male student from the central or southeastern region of the state of Oklahoma. The recipient must have a declared major of physical education with a desire to coach basketball in a public or private institution. The recipient must maintain a 2.5 GPA or above and be a fulltime ECU student. Coach Cobb was one of the most renowned basketball coaches in southern Oklahoma. Cobb was named head basketball coach at ECU in 1978 and is East Central's all-time winningest coach with over 600 wins. This scholarship was established by Wayne Cobb's friends and family. This scholarship will be awarded at the discretion of the Foundation's Scholarship Committee.

**COLE, DR. BILL AND SONDR  
CENTENNIAL BIOLOGY  
ENDOWMENT**

*Biology*

This scholarship will be awarded to a student majoring in biology who has maintained a cumulative GPA of 3.0. The recipient must also have a good work ethic, exhibit good moral character and show evidence of an active Christian faith. Dr. Cole served as ECU's president from 1989-2006 and this scholarship was established by his family, friends and colleagues in honor and memory of his service to the university.

**COLEMAN COMMUNICATION  
STUDIES SCHOLARSHIP**

*Communication/Performance Studies*

This scholarship will be awarded at the discretion of the Communication Studies Department. Established by ECU alumnus Tim Coleman, this scholarship will assist students in their pursuit of excellence in speech and communication skills.

**ROBERT D. COLEMAN, JR.  
CENTENNIAL MEMORIAL  
ENDOWMENT  
(PHI KAPPA TAU FRATERNITY)**

*Other*

This scholarship will be awarded to an active Phi Kappa Tau Fraternity member based on leadership abilities and service to the organization and community. The recipient should have a minimum 2.25 GPA, but leadership is stressed.

**COMMITMENT TO CHAMPIONSHIPS  
CENTENNIAL ENDOWMENT**

*Athletics*

This scholarship will be awarded at the discretion of the Athletics Department.

**CONN, GILLETTE SCHOLARSHIP**

*Human Resources,*

*Political Science/Legal Studies*

Jack Conn established this scholarship in memory of his wife Gillette. This scholarship will be awarded to a junior or senior who has maintained a 3.0 GPA or above. The recipient will have a declared major in Human Resources. This scholarship is also awarded to a student with a declared major of Political Science or Legal Studies.

I am writing to express my sincere gratitude for the generous Briles Scholarship. I was very ecstatic and appreciative to learn I was selected as a recipient for this scholarship. By awarding me the Briles Scholarship, you have lightened my financial burden which allows me to focus more on my academics and less on finances.

Taylor Pruitt  
Meeker, Okla  
English Education

I have only been at ECU two semesters, but they have been the most developmental part of my life. I hope to use this money to pay off some debt and stay on track to a degree I can be proud of.

Starla Demings  
Seminole, Okla  
Mathematics

### **EDNA MAE QUERY COOLEY BUSINESS SCHOLARSHIP**

#### *Business Administration*

This scholarship will be awarded to a student from Roff High School who plans to attend ECU and major in business. Mrs. Cooley taught at Roff High School for several years, and established this scholarship in order to help a Roff student achieve his/her career goals. This scholarship can be ongoing for up to eight consecutive semesters. A minimum 3.0 GPA must be achieved each semester.

### **COTTINGHAM / ROSS CENTENNIAL GRADUATE EDUCATION ENDOWMENT**

#### *Education*

This scholarship will be awarded to a student making progress toward a Master of Education Degree within the College of Education and Psychology. This scholarship was established by Jim and Shelley Ross Hamby in honor of their family members, Carrollee Cottingham, Melba Cottingham, and Jon & Marjorie Ross, all ECU alums.

### **MICK COWAN CENTENNIAL ACCOUNTING ENDOWMENT**

#### *Accounting*

This scholarship will be awarded to a student who is majoring in accounting. The friends

and family of Mr. Cowan established this scholarship in his honor after his retirement from the Accounting Department at ECU.

### **DR. TOM COWGER NATIVE AMERICAN STUDIES SCHOLARSHIP**

#### *History/Native American Studies*

This scholarship will be awarded by the department to a student who has declared a major or minor in Native American Studies. Named in honor of Dr. Cowger, a longtime member of the History Department, this scholarship was established by Carol Smith and her daughter Samantha Smith Bunyard.

### **JUDY CRABTREE CENTENNIAL MEMORIAL ENDOWMENT**

#### *Psychology*

This scholarship will be awarded to a junior or senior student majoring in psychology. The family of Mrs. Crabtree established this scholarship in her memory.

### **LEMOINE CRABTREE RUSSIAN SCHOLARSHIP**

#### *English/Languages*

This scholarship will be awarded at the discretion of the department.

### **JIM & GLENNA CRANFORD CHEERLEADING SCHOLARSHIP**

#### *Athletics*

This scholarship will be awarded to a student who participates in the ECU Cheerleading Program, with no requirement for major. The student must maintain a 3.0 cumulative GPA to qualify for this scholarship and must be of high character who will positively represent the names of James and Glenna Cranford.

### **MICHAEL CRAWFORD ACCOUNTING SCHOLARSHIP**

#### *Accounting*

This scholarship will be awarded at the discretion of the Accounting Department to a student who is majoring in accounting. This scholarship has been established by the accounting firm of Crawford and Associates in honor of Michael Crawford, an ECU alumnus, who has become a leader in the accounting world.

### **J.H. & JOYCE CRISWELL SCHOLARSHIP**

#### *English/Languages*

This scholarship is awarded at the discretion of the department. The Criswell family were

longtime residents of Ada and established this scholarship as part of their estate planning.

### **CROSS COUNTRY SCHOLARSHIP**

#### *Athletics*

This scholarship will be awarded to a deserving student who participates in the ECU Cross Country Program.

### **DR. JAMES O. DANLEY MATH SCHOLARSHIP**

#### *Math/Computer Science*

This scholarship will be awarded at the discretion of the math department. This scholarship was established by the friends and family of Dr. Danley, who was a former faculty member in the Math Department and served as department chair and was the first graduate dean at ECU.

### **WANITA DANLEY CENTENNIAL ENGLISH HONORS ENDOWMENT**

#### *English/Languages*

This scholarship will be awarded to an upperclassman majoring in English who is a member of the Honors Program. Mrs. Danley was a longtime member of the English Department, and this scholarship was established in her honor and memory by family, friends and colleagues.

### **DCT COLLEGE OF EDUCATION AND PSYCHOLOGY CENTENNIAL ENDOWMENT**

#### *Education, Psychology, Kinesiology*

This scholarship will be awarded to graduate students, who have been unconditionally admitted to their program of Education, Psychology or Kinesiology. The recipients graduate GPA must be a 3.5 or above and he/she must be enrolled in a minimum of three hours of graduate coursework in their program area. This scholarship is awarded at the discretion of the College of Education and Psychology Scholarship Committee or their chosen designee, and can be used for fall, spring and/or summer semesters.

### **DCT COLLEGE OF HEALTH AND SCIENCES CENTENNIAL ENDOWMENT**

#### *Biology, Cartography/Geography, Chemistry/Physics, Environmental Science, Family/Consumer Sciences, Math/ Computer Science, Nursing*

This scholarship will be available to all students in the College of Health and Sciences, with priority given to students pursuing a master's degree in a discipline



housed in the College of Health and Sciences at the time of the award. Recipient must maintain a minimum 3.25 GPA and be classified as a junior or above. To receive this scholarship, applicants must provide a plan for a community service project (preferably a project that benefits the Ada community), that will be completed during their junior year and that is verified by a mentoring faculty member. Preference will be given to students providing evidence of community service during their freshman/sophomore year(s). For the scholarship to be renewed during the students' senior year, they must complete a community service project in collaboration with mentoring a faculty member during their junior year or the student must have presented the activities and results of one of their previous community service projects at a state, regional, national, or international conference during their junior year and provide an acceptable update for the current service project.

### **DCT COLLEGE OF LIBERAL ARTS AND SOCIAL SCIENCES CENTENNIAL ENDOWMENT**

#### *Human Resources*

This scholarship will be awarded to graduate students pursuing a Master of Science in Human Resources. The recipients graduate GPA must be a 3.5 or above and he/she must be enrolled in a minimum of three hours of graduate coursework in their program area. Financial need will also be a consideration.

### **DCT STONECIPHER SCHOOL OF BUSINESS CENTENNIAL ENDOWMENT**

#### *Accounting, Business Administration*

This scholarship can be awarded to outstanding students who have been accepted into the "Freshmen Scholars Program" or the "Scholar Leader Program". This includes students from either the Accounting or Business Administration Department. This scholarship is awarded at the discretion of the Stonecipher School of Business Scholarship Committee or its chosen designee.

### **WILLIS I. DECKER MEMORIAL SCHOLARSHIP**

#### *Chemistry/Physics*

This scholarship will be awarded to a student majoring or minoring in chemistry with a minimum 2.75 GPA. Financial need will be considered and special consideration given to a student who is responsible for the largest percentage of his/her college expenses as compared to other applicants.

### **C.B. & ELEANOR DEDMON SPANISH MINOR SCHOLARSHIP**

#### *English/Languages*

This scholarship will be awarded to an incoming freshman who will be obtaining a minor in Spanish. This scholarship can be continued for eight semesters if all guidelines are met. The Dedmon's established both this scholarship and the Ozella Waner English Scholarship in gratitude for their educations at ECU.

### **DELTA DENTAL CENTENNIAL PRE-DENTAL ENDOWMENT**

#### *Biology*

This scholarship will be awarded to a student who is classified as a junior or senior, has declared a pre-dentistry major/track/program (or equivalent), has a 3.5 GPA, has demonstrated financial need, and is not an employee or immediate family member of an employee of Delta Dental of Oklahoma Oral Health Foundation.

### **MARY DEMKE / GIRLS STATE SCHOLARSHIP**

#### *Incoming Freshmen, Other*

This scholarship will be awarded to a student who has attended Oklahoma Girls State. Preference will be given to a student who is the daughter of a veteran.

### **JESSIE B. DEMOSS SCHOLARSHIP**

#### *Music*

This scholarship will be awarded to the outstanding music major on the basis of total contribution in music, along with above-average academic work.

### **JAMES & MILDRED (MURPHY) DENNIS EDUCATION SCHOLARSHIP**

#### *Education*

This scholarship will be awarded to a student in his/her semester of student teaching as selected by the Education Department. Mrs. Dennis is a 1950 graduate of ECU, and both she and her husband recognize the value of public school teachers and the education that they can provide to future generations.

### **DR. JOHN DENSFORD AWARD FOR ACADEMIC EXCELLENCE**

#### *Education*

This scholarship will be awarded to a student who has completed 45 credit hours, who

has been admitted to the teacher education program and who has maintained a cumulative 2.75 GPA or a 3.0 GPA in the last 30 hours. Dr. Densford was a long-time faculty member at ECU and this scholarship was established by his family, friends, and colleagues in his memory.

### **MIKE & LESLIE DICUS MEMORIAL ACCOUNTING SCHOLARSHIP**

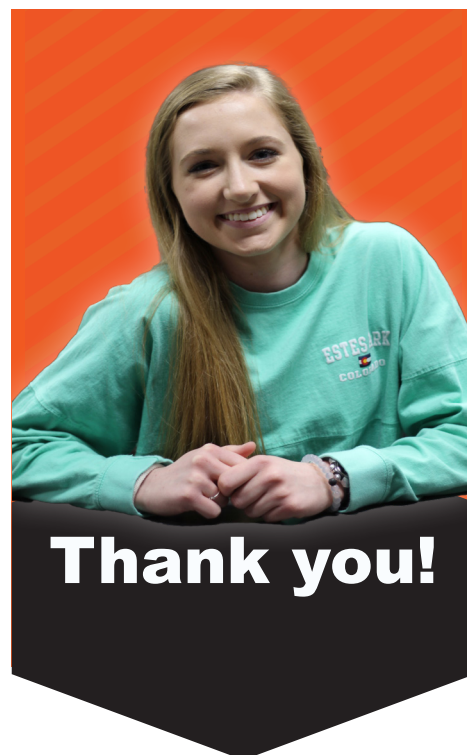
#### *Accounting*

This scholarship will be awarded to students who are majoring in accounting. Preference will be given to graduates of Ada-area high school schools and graduate accounting students may also be recipients. This scholarship was established by the friends and family of Mike and Leslie after their untimely deaths within a year of each other. It is maintained by a yearly golf tournament in their memory.

### **FRANK & JOHNNY (STEPHENS) DREW SCHOLARSHIP**

#### *Foundation*

This scholarship will be awarded to a student from one of the smaller school systems in Oklahoma (the size of Roff or Vanoss, for example). This scholarship was established by Slover Cape, an ECU alumnus, who was raised by his aunt and uncle Frank and Johnny Drew. This scholarship will be awarded at the discretion of the Foundation's Scholarship Committee.



**DARLENE DRYDEN  
MEMORIAL CHEERLEADING  
SCHOLARSHIP**

*Athletics*

This scholarship will be awarded to an ECU cheerleader based on leadership, GPA (3.0 minimum), and financial need. Darlene (Moore) Dryden was a cheerleader at ECU from 1975-1979. While at ECU, she was involved in many campus activities and served as a resident assistant in Pesagi Hall. She received her Bachelor's Degree in Elementary Education, and served in the public school system for 25 years.

**J.G. DUCKETT  
PRE-MED SCHOLARSHIP**

*Biology*

This scholarship will be awarded to a student planning to attend medical school, preferably from the Konawa area. Dr. Duckett was a Konawa native and established this scholarship to assist ECU students.

**DAISY MOORE DUVALL  
SCHOLARSHIP**

*English/Languages*

This scholarship will be awarded to an English major who is a sophomore or higher in classification and who has maintained a minimum 3.25 GPA. Ms. Duvall was a long-time English/History teacher and this was established by her family and friends in her honor and memory.

**ECU ALUMNI ASSOCIATION  
LEGACY SCHOLARSHIP**

*Incoming Freshmen*

This scholarship will be awarded to incoming freshmen students who have a parent, grandparent, or guardian who are current members of the ECU Alumni Association. Other guidelines may be established at the discretion of the Alumni Association.

**ECU GRADUATE  
ACCOUNTING FUND**

*Accounting*

This scholarship will be used to assist students enrolled in the Accounting Master's Program.

**ECU WOMEN'S CLUB  
SCHOLARSHIP**

*Other*

This scholarship will be awarded at the discretion of the ECU Women's Club, with special consideration for financial need.

I would like to express my profound gratitude at being chosen to receive the Ayleine Johnson Memorial Music Scholarship. It is my goal and dream to graduate from East Central University equipped with the tools I need to educate and reach young lives through the beautiful medium of music.

Abigail Hardage  
Washington, Okla  
Music

**LUTHER EDGE  
SPANISH-SPEAKING STUDENT  
SCHOLARSHIP**

*English/Languages*

This scholarship will be awarded to a student who speaks Spanish as a first language, or who comes from a Spanish-speaking country or area. The student must have a minimum cumulative 2.5 GPA.

**DR. BENNY & RITA EDWARDS  
SCHOLARSHIP**

*Biology*

This scholarship will be awarded to students majoring in pre-dental or pre-medicine, preferably from the Konawa area. The recipient must have a cumulative GPA of 3.5 or above. This scholarship was established by Dr. and Mrs. Benny Edwards in honor of their parents' tremendous support and strong emphasis on education.

**JACK & GLADYS ELDRIDGE  
SCHOLARSHIP**

*Foundation*

This scholarship will be awarded to a junior

or senior in good standing and performing satisfactory work toward a degree, with preference to a student from Garvin County. This scholarship will be awarded at the discretion of the Foundation's Scholarship Committee.

**RUBEN & KARLA ELIZARDE  
CENTENNIAL ATHLETIC  
ENDOWMENT**

*Athletics*

This scholarship will be awarded to a student of Hispanic heritage who has completed athletic eligibility, but still needs additional hours to obtain a bachelor's degree. This scholarship may also be awarded to a student athlete working toward a master's degree. Preference will be given to a student who has participated in the football program. However, if there is not a student who meets these guidelines at any given time, consideration may be given to a Hispanic student of either gender who has participated in any sport offered by ECU.

**ENGLISH DEPARTMENT STUDENT  
TEACHING AWARD**

*English/Languages*

This scholarship will be awarded in the spring semester each year at the discretion of the department.

**RAYMOND ESTEP  
2000 FUND HISTORY  
SCHOLARSHIP**

*History/Native American Studies*

This scholarship is available to history majors who have completed at least 60 hours and have maintained a 3.5 GPA in history and a 3.25 cumulative GPA. Dr. Estep was an ECU Distinguished Alumnus and established this scholarship to assist students in the study of history.

**RAYMOND ESTEP  
HISTORY SCHOLARSHIP**

*Incoming Freshmen, History/Native American Studies*

This scholarship will be awarded to an incoming freshmen who has declared history as a major. Dr. Estep was an ECU Distinguished Alumnus and established this scholarship to assist students in the study of history.

## **RAYMOND ESTEP HISTORY SCHOLARSHIP AWARD OF EXCELLENCE**

### *History/Native American Studies*

This will be awarded to the outstanding student in history as determined by the History Department's Scholarship Committee. Dr. Estep was an ECU Distinguished Alumnus and established this scholarship to assist students in the study of history.

## **DR. RONALD D. & ESTELLE L. EVANS CENTENNIAL EDUCATION ENDOWMENT**

### *Education*

This scholarship will be used at the discretion of the Education Department. Dr. and Mrs. Evans established this scholarship, as well as the Centennial Athletic Scholarship, in order to assist ECU students while attending school.

## **RAY FARMER CENTENNIAL MEMORIAL ENDOWMENT**

### *Criminal Justice/Vocational Rehabilitation*

This scholarship will be awarded to a student enrolled in the COPS program who has maintained a minimum 2.8 GPA and who also possesses the potential for success as a CLEET officer. Mr. Farmer was the

chief of police at ECU and this scholarship was established by his family, friends and colleagues in his memory.

## **FARNHAM FAMILY CENTENNIAL ACCOUNTING ENDOWMENT**

### *Accounting*

This scholarship will be awarded to outstanding students majoring in accounting. Mamie Farnham established this scholarship in memory of her husband, Jerry, who was an accounting major at ECU. After Mamie's death in 2012, the scholarship was expanded to assist numerous students in the Accounting Department.

## **MARY & HARVEY FAUST MUSIC SCHOLARSHIP**

### *Music*

This scholarship will be awarded to gifted and talented music students who need financial assistance. Mary Bella Faust was an accomplished pianist and teacher and Harvey Faust was a member of a male quartet which performed extensively during the 1940's and 1950's. He also served as registrar at ECU for several years.

## **MARY BELLA FAUST PIANO SCHOLARSHIP**

### *Music*

This scholarship will be awarded to a student majoring in piano who shows exceptional talent and discipline. Additional guidelines may be obtained from the Music Department. This scholarship was established by an anonymous donor who is an accomplished composer and musician, who understands the value of music in society.

## **FAUST MUSIC SCHOLARSHIP**

### *Music*

This scholarship will be awarded to an outstanding music student at the discretion of the Music Department. Mrs. Faust was an accomplished pianist and teacher and was a member of a male quartet which performed extensively during the 1940's and 1950's. He also served as registrar at ECU for several years and was a founding member of the ECU Foundation.

## **FENTON FAMILY BUSINESS SCHOLARSHIP**

### *Accounting, Business Administration*

This scholarship will be awarded to an outstanding accounting student and an outstanding business administration student. Brad Fenton, an ECU alumnus and thriving businessman, established this scholarship

to assist students who are working toward degrees in either accounting or business administration.

## **DOROTHA LUTTRELL FENTON EARLY CHILDHOOD SCHOLARSHIP**

### *Education*

This scholarship was established in honor of Mrs. Fenton by her son Brad and other family members. This scholarship will be awarded at the discretion of the department.

## **LANCE FENTON MATH SCHOLARSHIP**

### *Math/Computer Science*

This scholarship will be awarded at the discretion of the Math Department. This fund was established by ECU alumnus Brad Fenton in honor of his son Lance.

## **CHARLES FLETCHER ACCOUNTING SCHOLARSHIP**

### *Accounting*

This scholarship will be awarded to a student majoring in accounting and was established by friends and family of Mr. Fletcher after his death.

## **BILLIE FATHREE FLOYD PHYSICAL EDUCATION SCHOLARSHIP**

### *Education*

This scholarship will be awarded to a student who is majoring in elementary education and who plans to teach physical education at the elementary school level. The student must maintain at least a 2.75 cumulative GPA and must have been admitted to ECU's Teacher Education Program. Mrs. Floyd is a longtime Ada resident and former faculty member at ECU. This scholarship has been established in her honor by her family, friends and colleagues.

## **DENTON & ETHEL FLOYD SCHOLARSHIP**

### *Education*

Mr. Floyd was a long-time instructor at ECU, and established this scholarship to assist students in obtaining a higher education. This scholarship will be awarded to a student entering their student teaching semester.

## **FOUNDATION AWARD OF EXCELLENCE**

### *Foundation*

Applicants must be admissible to East Central University, have maintained a



**Thank you!**



cumulative GPA of 3.76 or above, and achieved a minimum ACT score of 28 (ACT Requirement for Incoming Freshmen Only). Fulltime enrollment at ECU is required, and a GPA of 3.75 must be achieved during the fall semester in order to qualify for the second half of the scholarship in the spring semester. Other factors may be considered at the discretion of the Foundation's Scholarship Committee and the amount of the scholarship will also be determined by this committee.

## **FOUNDATION GENERAL SCHOLARSHIP**

### *Foundation*

Applicants must be admissible to East Central University, have maintained a cumulative GPA of 3.00-3.49 and achieved a minimum ACT score of 23 (ACT Requirement for Incoming Freshmen Only). Fulltime enrollment at ECU is required, and a GPA of 3.0 must be achieved during the fall semester in order to qualify for the second half of the scholarship in the spring semester. Other factors may be considered at the discretion of the Foundation's Scholarship Committee, and the amount of the scholarship will also be determined by this committee.

## **FOUNDATION SPECIAL SCHOLARSHIP**

### *Foundation*

Applicants must be admissible to East Central University, have maintained a cumulative GPA of 3.5-3.75 and achieved a minimum

ACT score of 25 (ACT Requirement for Incoming Freshmen Only). Fulltime enrollment at ECU is required, and a GPA of 3.5 must be achieved during the fall semester in order to qualify for the second half of the scholarship in the spring semester. Other factors may be considered at the discretion of the Foundation's Scholarship Committee and the amount of the scholarship will also be determined by this committee.

## **FOUNTAIN FAMILY BUSINESS SCHOLARSHIP**

### *Business Administration*

This scholarship will be awarded at the discretion of the Business Administration Department and has been established by Dr. Pat Fountain and his family to assist students in the pursuit of a business administration degree.

## **DR. NORMAN FRAME MEMORIAL SCHOLARSHIP**

### *Education*

Dr. Frame was a longtime instructor at ECU. His friends and family established this scholarship to assist students in their pursuit of a degree in education. This scholarship requires a minimum 2.5 GPA and will be awarded to those already admitted into the ECU Teacher Education Program.

## **FRANCISCO-HATCHETT SCHOLARSHIP**

### *Biology, Political Science/Legal Studies*

This scholarship will be awarded to pre-med students and those who plan to pursue scientific research on the graduate level. It must be awarded equally to male and female students. Hallie Brown Ford, ECU alumna, established this scholarship to reward academic excellence in the areas of pre-law, pre-medicine and scientific research. It is named after two of her favorite teachers when she was in attendance at ECU.

## **DR. BUDDY GASTER PROGRAM IN MARKETING**

### *Business Administration*

This scholarship will be awarded to a student majoring in marketing. Dr. Gaster was a longtime member of the School of Business faculty, and this scholarship was established in his honor and memory by family, friends and colleagues.

## **GRACE GEORGE SCHOLARSHIP**

### *Family/Consumer Sciences*

This scholarship will be awarded to a student who has completed 45 to 70 semester hours

and who has maintained a minimum 3.0 GPA. Students who are interested should submit a current class schedule, current transcript, and a resume which includes work experience, scholastic accomplishments, organizational and service activities, statement of need and future career plans. Mrs. George was a longtime faculty member at ECU, and this scholarship was established in her honor by family, friends, and colleagues.

## **GLBT CENTENNIAL DIVERSITY ENDOWMENT**

### *Other*

This scholarship will be administered by the ECU Human Diversity Committee. This fund was established by ECU alumnus Jim Gray in order to promote diversity at the collegiate level.

## **GODWIN FAMILY BUSINESS SCHOLARSHIP**

### *Business Administration*

This scholarship will be awarded at the discretion of the business administration department. Established by Dean Wendell Godwin and his family, this scholarship will assist students who are pursuing a degree in business administration.

## **DUANE GODWIN CENTENNIAL ENDOWMENT**

### *Athletics*

This scholarship will be awarded to an outstanding athlete, with preference given to a participant in ECU's basketball program. The funds for this scholarship were donated in memory of Duane, an outstanding basketball player at ECU, after his untimely death.

## **LLOYD GOSS BOOK SCHOLARSHIP**

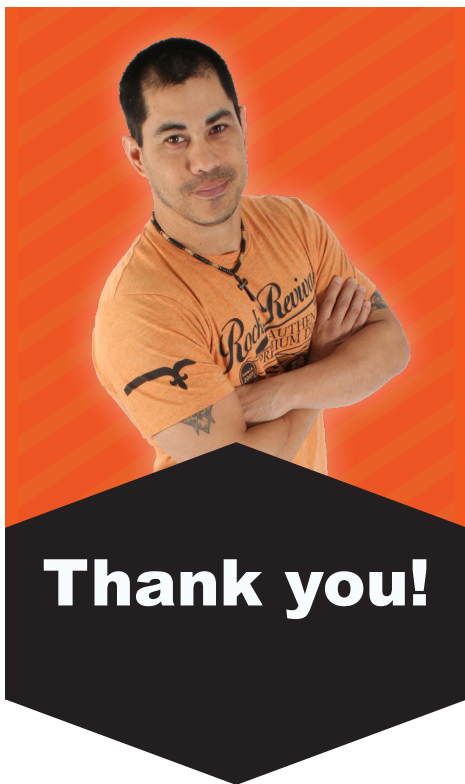
### *History/Native American Studies*

This scholarship will be awarded at the discretion of the History Department. Dr. Goss was a longtime faculty member in the department and this was established in his honor.

## **JIM GRAY CENTENNIAL BUSINESS ADMINISTRATION SCHOLARSHIP**

### *Business Administration*

This scholarship will be awarded at the discretion of the Business Administration Department. Jim Gray is an ECU alumnus who has provided funds for numerous



projects in the Stonecipher School of Business and has also funded other scholarships at the ECU Foundation.

**PEE GRAY  
MEMORIAL SCHOLARSHIP  
(SUMMER ONLY)**

*Criminal Justice/Vocational Rehabilitation*

This scholarship will be awarded to a student selected by the department with a concentration in law enforcement. Mr. Gray was chief of police in Ada, and this scholarship was established by his family, friends, and colleagues in his memory.

**INA GREEN  
MEMORIAL SCHOLARSHIP**

*Education*

This award was established by Dr. Jack Green in honor of Mrs. Green, his grandmother. This scholarship will be awarded at the discretion of the department.

**GREEN, LOWELL  
HUMAN RESOURCES  
SCHOLARSHIP**

*Human Resources*

This scholarship will be awarded to a junior or senior student who has maintained a minimum 3.0 GPA and has a major in human resources, preferably in the rehabilitation counseling area. Preference will be given to a student with a disability.

**DR. TIM GREEN  
CENTENNIAL EDUCATION  
ENDOWMENT**

*Education*

This scholarship will be awarded to an elementary education student who plans to become a reading specialist. If no education student qualifies, the next preference will be given to a student planning on a coaching career. Dr. Green was a longtime member of the ECU community, serving first as a teacher in the Education Department and later as Athletic Director for several years. This scholarship was established by his family, friends, and colleagues in his honor and memory.

**HACKWORTH-MARCO  
MEMORIAL SCHOLARSHIP**

*Biology*

This scholarship will be awarded to a student from the McAlester area who is planning to attend medical school.

Without the financial assistance I have received from East Central University, I would be left without a means to afford the education ECU has provided me. The support I have received lifts a massive burden during already stressful times.

Ryan Scott  
Stonewall, Okla  
Biology and Sociology

**JUSTICE RUDOLPH HARGRAVE  
CENTENNIAL LEGAL STUDIES  
ENDOWMENT**

*Political Science/Legal Studies*

This scholarship will be awarded at the discretion of the department. Justice Hargrave, an ECU graduate, served as Chief Justice of the Oklahoma Supreme Court. His family has established this scholarship in his honor and memory.

**MADELINE HARGRAVE  
CENTENNIAL EDUCATION  
ENDOWMENT**

*Education*

Established by Dr. Jack Paschall and Hargrave family members, this scholarship honors Mrs. Hargrave for her excellence in teaching and influence on students. This scholarship will be awarded at the discretion of the department.

**YVETTE HARJO  
ACCOUNTING SCHOLARSHIP**

*Accounting*

This scholarship will be awarded for excellence in accounting and has been established by friends and family of Dr. Harjo in her honor.

**JEREMY HARREL  
MEMORIAL SCHOLARSHIP**

*Incoming Freshmen*

This scholarship will be awarded to a Pauls Valley High School senior who plans to attend ECU. Family and friends of Jeremy established this scholarship after his death in a tragic automobile accident.

**BILL & MARGARET HARRIS  
SCHOLARSHIP**

*Education*

This scholarship will be awarded to a junior or senior student pursuing an education degree in the area of math and sciences. The student must have maintained a minimum 2.5 GPA. This scholarship was established in 1988 by the Central and South West System, its employees and friends, to honor Bill Harris, vice-chairman of the Central and South West Corporation on the occasion of his retirement.

**BURL HARRIS  
CENTENNIAL LEGAL STUDIES  
ENDOWMENT**

*Political Science/Legal Studies*

This scholarship will be awarded to a junior or senior student majoring in legal studies who has maintained a minimum 3.5 GPA. Mr. Harris was an ECU alumnus, longtime member of the Ada legal community and a founding member of the ECU Foundation, Inc. His wife Jan established this scholarship in his memory.

**JAMES HARRIS  
CENTENNIAL CLASS ENDOWMENT**

*Other*

This scholarship will be awarded to a member of the Pi Kappa Alpha Fraternity who is majoring in a CLASS (College of Liberal Arts and Social Sciences) area. Dr. Harris taught history at ECU for years and this scholarship has been established by his fraternity brothers in his honor.

**MARGUERITE HAWKINSON  
SCHOLARSHIP**

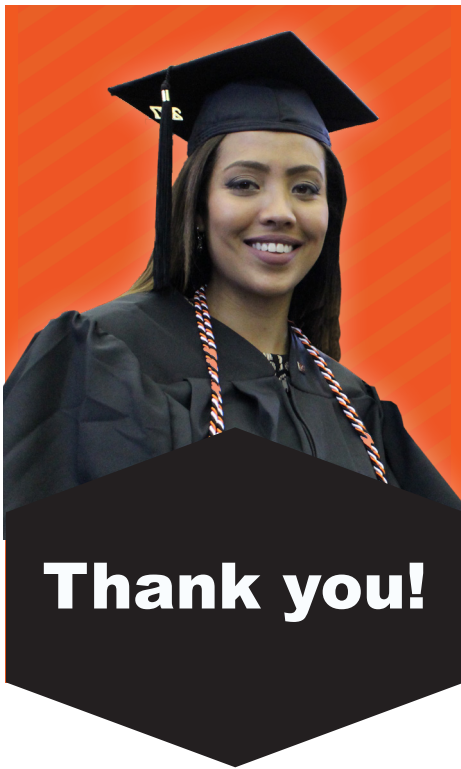
*Music*

This scholarship will be awarded to a junior student majoring in vocal music in either education or performance.

**EUGENE HENSLEY SCHOLARSHIP**

*Incoming Freshmen*

This scholarship will be awarded to an Ada High School student who plans to attend



ECU and exhibits good reading/English skills. The recipient will be selected by Ada High School administrators.

### **CHALMERS & CHARLOTTE HERMAN SCHOLARSHIP**

#### *Incoming Freshmen*

This scholarship will be awarded to an Ada High School senior who plans to attend ECU and is based on need. Dr. Herman taught Spanish and languages at ECU for several years, and this scholarship was established in his honor after his retirement. The recipient will be selected by Ada High School administrators.

### **HIGGINBOTHAM FAMILY SCHOLARSHIP**

#### *All Departments*

This scholarship will be awarded to a senior accounting student with a minimum 3.25 GPA, with priority given to a student who is considering entering the master's degree program in accounting at ECU. Dorothy Higginbotham was an ECU alumna who understood and recognized the value of higher education. The scholarship was established as part of her estate planning.

### **JOHN L. HOGGATT SCHOLARSHIP**

#### *Education*

This scholarship will be awarded to a senior majoring in special education who has maintained a minimum 3.0 GPA, has

financial need, possesses leadership skills, and demonstrates high moral standards, integrity and concern for others. John was a senior at Byng High School when he died in a tragic automobile accident. This scholarship was established in his memory by family and friends.

### **HOLCIM ENVIRONMENTAL SCIENCE SCHOLARSHIP**

#### *Environmental Science*

This scholarship will be awarded at the discretion of the department.

### **ALAN & ANITA HOLLOWAY CENTENNIAL ACCOUNTING ENDOWMENT**

#### *Accounting*

This scholarship will be awarded at the discretion of the department. It was established by brother and sister, Alan and Anita, who are both ECU alums.

### **RONALD & SARAH HOLMES GRADUATE ACCOUNTING SCHOLARSHIP**

#### *Accounting*

This scholarship will be awarded to a student who is working on a master's degree in accounting. It was established in memory of Mr. Holmes and in honor of Dr. Sarah Holmes by friends and family members.

### **HORACE MANN SOCIETY CENTENNIAL ENDOWMENT**

#### *Education*

Alumni of Horace Mann School have provided the funds for this scholarship. This scholarship will be awarded at the discretion of the department.

### **HORNBEAK, LOUISE HISTORY SCHOLARSHIP**

#### *History/Native American Studies*

This scholarship will be awarded at the discretion of the department. Ms. Hornbeak was a long-time member of the History department faculty, and this scholarship was established after her death in 1991 as part of her estate planning.

### **LEE HORNE CENTENNIAL ATHLETIC SCHOLARSHIP**

#### *Athletics*

This scholarship will be awarded to a student participating in ECU's football or basketball program who has no remaining eligibility, but still needs additional college work to

reach degree completion. Mr. Horne was an avid supporter of ECU athletics and other programs and served on the Foundation's Board of Directors for several years. This scholarship was established in his memory by his family, friends and colleagues after his death in 2009.

### **JERRY HOWARD MEMORIAL SCHOLARSHIP**

#### *Music*

This scholarship will be awarded at the discretion of the music department. Friends and family of Jerry Howard established this scholarship in his memory - he was an accomplished musician, band director and owner of Howard Music Store in Ada.

### **JANIE HOWELL SCHOLARSHIP**

#### *Education*

This scholarship will be awarded to students from Konawa High School who plan to major in education. Mrs. Howell taught at Konawa High School for several years. This scholarship was established in her memory by family and friends. This scholarship will be awarded at the discretion of the department.

### **PAU HUGHES WRITING AWARD**

#### *English/Languages*

This award is presented to winners of the annual Creative Writing Competition sponsored by the English/Languages Department. Any type of creative writing will be eligible for consideration, including poetry, fiction, non-fiction or articles. This fund was established by the family of Mr. Hughes.

### **BRET D. ISENHOWER MEMORIAL SCHOLARSHIP**

#### *Other*

This scholarship has been established by the ECU GOLD Program and the ECU Chapter of Pi Kappa Alpha. It will be awarded to a veteran (honorably discharged), an actively serving reservist, a child of a veteran or fallen service member or a member of the ECU Greek Community who best exemplifies the character and willingness to "serve a purpose greater than his or her self" that was exhibited by Bret Isenhower during his time of military service.

### **AYLINE JOHNSON MEMORIAL MUSIC SCHOLARSHIP**

#### *Music*

This scholarship will be awarded at the discretion of the department. Aylene Johnson



was an accomplished organist and this scholarship was established in her memory by family and friends.

## **JOHNSON, CARLOS ACCOUNTING SCHOLARSHIP**

### *Accounting*

This scholarship will be awarded to an outstanding accounting student. Dr. Johnson was a former ECU faculty member in the Accounting Department and has excelled in the accounting world.

## **CODY JOHNSON FIVE80 MEMORIAL SCHOLARSHIP**

### *Incoming Freshmen*

This scholarship will be awarded to a Pontotoc County student who will be attending ECU and has an interest in athletics. Cody was killed in a tragic motorcycle accident in 2012, and his family, friends, and the "FIVE80" Riders established this scholarship in his memory. The application for this scholarship is distributed by Cody's family and the FIVE80 Riders.

## **JONES FAMILY BUSINESS SCHOLARSHIP**

### *Business Administration*

This scholarship will be awarded at the discretion of the business administration department. Established by Dr. Charlie Jones and his family, this scholarship will be used to assist students in their pursuit of a degree in business administration.

## **IVAN & MARY JO KEATLEY SCHOLARSHIP**

### *Foundation*

Both of the Keatleys are ECU alumni who have recognized the value of higher education. This scholarship will be awarded at the discretion of the Foundation's Scholarship Committee.

## **KELLY/GRIFFIN AWARD**

### *Cartography/Geography*

This scholarship will be awarded to a junior or senior student majoring in cartography who best exemplifies the discipline inside and outside of the classroom. This scholarship was established after the death of Mr. Griffin in 1989 by his parents, Mr. and Mrs. Marcus Griffin, and Dr. T. A. Kelly, who was an instructor in the department.

## **GLADYS KENDALL ART SCHOLARSHIP**

### *Art*

This scholarship will be awarded to a student major in art and will be based on artistic and creative potential, financial need and departmental contribution. This fund was established by the family of Ms. Kendall.

## **FRANK & RUTH KENNON CENTENNIAL ATHLETIC ENDOWMENT**

### *Athletics*

This scholarship will be awarded to a current or former ECU basketball or football player at the discretion of the ECU men's basketball coach or ECU's athletic director. This scholarship was established by Coach Kennon's family, friends and former students in his memory.

## **GERALDINE KERR CENTENNIAL MUSIC ENDOWMENT**

### *Music*

This scholarship will be awarded at the discretion of the music department.

## **KATE KNIGHT FINE ARTS SCHOLARSHIP**

### *Music*

This scholarship will be awarded at the discretion of the department. Knight Hall on the ECU campus was named after Ms. Knight and it is rumored that her ghost still walks the halls.

## **KATE KNIGHT MATH SCHOLARSHIP**

### *Math/Computer Science*

This scholarship will be awarded to an outstanding mathematics major. Knight Hall on the ECU campus was named after Ms. Knight and it is rumored that her ghost still walks the halls.

## **MARVIN KROEKER WRITING AWARD**

### *History/Native American Studies*

This will be an annual award to the History/NAS student who prepares the best paper in his/her major. This fund was established by Dr. Kroeker, a longtime member of the History Department faculty.

## **MARK LANDRUM SCHOLARSHIP BY LANDMARK BANK**

### *Business Administration*

This scholarship will be awarded to a junior majoring in business with a concentration in finance. A minimum 3.0 GPA is required, and preference will be given to a student from one of the counties in which Landmark Bank has a banking facility, as listed below:

Missouri: Boone County  
Howell County  
Shannon County  
Texas County

Texas: Cooke County  
Grayson County

Oklahoma: Bryan County  
Carter County  
Garvin County  
Johnston County  
Marshall County  
Murray County  
Pontotoc County

## **CHRIS LANE CENTENNIAL ATHLETIC ENDOWMENT**

### *Athletics*

This scholarship will be awarded at the discretion of the Athletics Department.

I would like to say thank you for choosing me to be the recipient of the ECU Foundation Scholarship. I have heard such wonderful things about East Central University and the Art Department. I'm one step closer to achieving my dream because of your generous support.

Tiffany KayAnn Johnson  
Allen, Okla  
Graphic Art

## LEON & PAULINE LANOY CENTENNIAL GRADUATE EDUCATION ENDOWMENT

### *Education*

This scholarship will be awarded to an education student working on his/her master's degree. A minimum 3.0 GPA is required, and other guidelines may be developed by either the donor or the Education Department. The Lanoy's were educators for over 40 years, teaching in both Oklahoma and Wyoming. Pauline taught all subjects in grades K through 8 and Leon was a teacher, principal and superintendent during his career in education. Both Leon and Pauline were inducted into the ECU Educators' Hall of Fame in 2009 and were recognized as ECU's Distinguished Philanthropists in 2008. They established this scholarship to assist master's degree students because of their strong belief in the value of higher education and the teaching profession.

## LADONNE LATIMER CENTENNIAL ENDOWMENT

### *Incoming Freshmen*

This scholarship will be awarded to an Ada High School student who plans to attend ECU with preference to a student from a single-parent home. The recipient must have a minimum 3.0 GPA and minimum ACT score of 21. Mrs. Latimer worked at ECU for several years and this scholarship was established in her memory by friends and family. Ongoing donations are made to this scholarship by her sister Beverley Bowen. The recipient will be selected by Ada High School administrators.

## LOIS & CEPHUS LAWSON EDUCATION SCHOLARSHIP

### *Education*

This scholarship will be awarded to a junior or senior majoring in education with a minimum 3.0 GPA. This fund was established by the Lawson family in gratitude for the opportunity that ECU afforded their children to achieve college educations. They had five children, all of whom graduated from ECU.

## TREASE LAYTON CENTENNIAL FCS SCHOLARSHIP

### *Family/Consumer Sciences*

This scholarship will be awarded to an incoming freshman who plans to major in Family and Consumer Sciences. Ms. Layton is an ECU alumna and established this scholarship in gratitude to ECU.

## CLYDE LEACH & JAMIE SAVAGE NURSING SCHOLARSHIP

### *Nursing*

This scholarship will be used for assistance with books and equipment for students who have been admitted to the nursing program. The selection of recipients will be made by the Nursing Department. Clyde and Jamie Leach, Ada business owners, are the donors of this scholarship. Jamie is a former nurse who understands the expenses and challenges involved in attending nursing school.

## LEADERSHIP MURRAY COUNTY CLASS XII CENTENNIAL ENDOWMENT

### *Foundation*

This scholarship will be awarded to incoming freshmen from Davis High School, Sulphur High School or the Oklahoma School for the Deaf in Murray County. The recipient must have a cumulative high school GPA of 3.5 or above and attend ECU as a full time student the fall semester immediately following their high school graduation. This scholarship will be awarded at the discretion of the Foundation's Scholarship Committee.

## BRAD LEMARR MEMORIAL HISTORY SCHOLARSHIP

### *History*

This scholarship will be awarded to a junior or senior History major who has maintained a cumulative GPA of 3.25 or above, is a member of Phi Alpha Theta (History Honor Society), and has presented a paper or poster at one of the following: Phi Alpha Theta Research Day, the Great Plains Honors Conference or Alpha Chi. This scholarship was established by Dr. Jody Tacker, sister of Brad LeMarr, after his tragic death in January 2015. Both Jody and Brad were outstanding history students at ECU and Dr. Tacker wanted to keep the memory of her brother alive with the establishment of this scholarship.

## GEORGIA HOWELL LIMES SCHOLARSHIP

### *Education*

This was established in Mrs. Limes' honor and memory by her family. This scholarship will be awarded at the discretion of the department.

## ADOLPH LINSCHIED SPEECH AWARD

### *Communication/Performance Studies*

This scholarship will be awarded to an

I genuinely appreciate the opportunity to study at East Central University. Thanks to the scholarships I have received along the way I have been able to excel in the Stonecipher School of Business.

Kennedy Payne  
Ada, Okla  
Business Administration

outstanding student with a minimum 2.5 GPA. Three groups will be considered for this award: students who are planning to pursue a profession in which public speaking will be used extensively, students planning to enter the teaching profession and students who excel in forensic competition. This scholarship was established to honor Dr. Linscheid, who served as ECU's president from 1920-1948 and Dr. Nabors, who was a longtime faculty member at ECU.

## HAZEL LINSCHIED AWARD

### *Education*

This scholarship was established by the Fortnightly Study Clubs of Ada in memory of Mrs. Linscheid who was a charter member of this club and was the wife of ECU President Emeritus Dr. Adolph Linscheid. This scholarship will be awarded at the discretion of the department.

## LITTLE FAMILY CENTENNIAL PROFESSIONAL WRITING ENDOWMENT

### *English/Languages*

This scholarship will be awarded to an outstanding student in the area of professional writing. This scholarship was established with funds donated in memory of William Little Sr. and his son William Little Jr. The elder Little was editor of the Ada newspaper for years, and his son-in-

law, George Gurley, continued on in this traditional family occupation.

## **RUDY LUPINSKI**

### **ACT II HONORARY SCHOLARSHIP**

*Music, Communication/Performance  
Studies*

This scholarship will be awarded to a student who has been involved in both ACT II and ECU Musical Theatre within the past year (including summer productions). The recipient can be an actor/actress, stage manager, musician, set designer, camp counselor or involved with sound and lighting. The recipient must be a current ECU student maintaining at least a 2.5 GPA and someone who represents both ECU and ACT II in a professional manner.

## **BROWN MACKIN SCHOLARSHIP**

*Chemistry/Physics*

This scholarship will be awarded at discretion of the Physics Department. Dr. Mackin was a longtime faculty member at ECU and this scholarship was established in his honor and memory by family, friends and colleagues.

## **W.E. & MINNIE (CURTIS) MARTIN CENTENNIAL BOOK ENDOWMENT**

*Foundation*

This scholarship will be awarded to ECU students to assist with book purchases. The families of Pete Duncan and Don Martin established this scholarship to honor their grandparents, W.E. and Minnie Martin, who are ECU alumni. This scholarship will be awarded at the discretion of the Foundation's Scholarship Committee.

## **FRANCIS G. MAYHUE PRE-LAW SCHOLARSHIP**

*Political Science/Legal Studies  
(Sophomore, Junior, & Senior Levels)*

These scholarships will be awarded to students who plan to attend law school. Funds were provided as a result of a gift from the estate of Francis E. Mayhue, longtime Ada resident and member of the legal community.

## **McCASLAND FOUNDATION NURSING SCHOLARSHIP**

*Nursing*

This scholarship will be awarded to an incoming freshman with a declared major in nursing. Preference will be given to students from these Oklahoma counties: Caddo, Comanche, Carter, Garfield, Garvin, Grady, Logan, Love, Stephens and Woodward. Recipients must maintain a 2.25

GPA and be enrolled fulltime at East Central University. This scholarship was established by the McCasland Foundation of Duncan, Oklahoma.

## **BUSTER & ARLENE McGEE SCHOLARSHIP**

*Education*

This scholarship will be awarded to a student from the Butner/Okemah/Prague areas who major in education. Students from other geographical areas may be chosen if these guidelines cannot be met. The scholarship may be continued for consecutive semesters if all guidelines are met. The McGee's were the parents of Twylah McGee Horne and the Horne family has established this scholarship in their memory.

## **JOHN BOYCE & GRACE McKEEL SCHOLARSHIP**

*Foundation*

This scholarship will be awarded at the discretion of the Foundation's Scholarship Committee and the recipient must have a minimum 3.0 GPA.

## **DR. BARBARA McKINZIE CENTENNIAL ACCOUNTING ENDOWMENT**

*Accounting*

This scholarship will be awarded to an outstanding accounting student.

## **DR. THOMAS McKNIGHT SCHOLARSHIP**

*Biology*

This scholarship will be awarded at the discretion of the Biology Department. Dr. McKnight taught biology at ECU for several years and this scholarship was established by family, friends and colleagues in his memory.

## **CHARLIE MELTON SCHOLARSHIP**

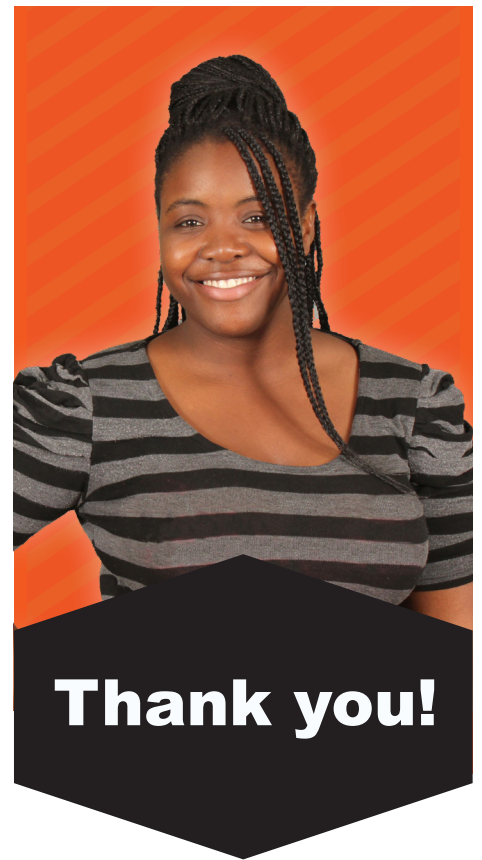
*Incoming Freshmen*

This scholarship will be awarded to an Ada High School student who will be attending ECU. The recipient must have an ACT score of 23 or higher and a GPA of 3.0 or higher. The recipient will be selected by Ada High School administrators.

## **MILLER "BUTTON" SCHOLARSHIP**

*Business Administration*

This scholarship will be awarded to a student majoring in business administration. The original donations to this scholarship were made by Miller Office Equipment.



## **MILLSAP CENTENNIAL ENDOWMENT FOR HEALTH PROFESSIONALS**

*Biology*

This scholarship will be awarded to a student who plans to attend medical school. Dr. Mark Millsap, an ECU alumnus, has established this scholarship in order to assist students in their pursuit of a medical degree.

## **MICHAEL MILLSAP ACCOUNTING SCHOLARSHIP**

*Accounting*

This scholarship will be awarded at the discretion of the department, and was established by Mr. Millsap, an ECU alumnus.

## **TARA MILLSAP STUDENT TEACHING SCHOLARSHIP**

*Education*

This scholarship will be awarded to an education student during his/her semester of student teaching. Ms. Millsap is an ECU graduate and teaches in Sulphur, Oklahoma.

## **DANIEL MINNICH CENTENNIAL MEMORIAL STUDENT TEACHING ENDOWMENT**

*Education*

This scholarship will be awarded to an education student during his/her semester



of student teaching. Daniel was an ECU student who died during his student teaching semester and this scholarship has been established by his family and friends in his memory. Yearly funding is provided by a golf tournament in Daniel's name.

### **MORGAN FAMILY FOUNDATION CENTENNIAL MUSIC EDUCATION ENDOWMENT**

#### *Music*

This scholarship will be awarded to a student in his/her semester of student teaching. The Morgan family has made numerous contributions to the ECU Foundation and continues to be a big supporter of the fine arts.

### **FINIS MORRISON SCHOLARSHIP**

#### *Music*

This scholarship will be awarded to an outstanding student providing leadership in the humanities area. Scholarships will be available in the areas of drama, instrumental music, vocal music and piano.

### **JANE MUNTZ CENTENNIAL MUSIC ENDOWMENT**

#### *Music*

This scholarship will be awarded in the area of sacred music and will reward academic excellence. Mrs. Muntz established this scholarship because of her love of music and

her interest in ECU students. She graduated from ECU in 1941 with a degree in music.

### **ROB MUNTZ MUSIC AWARD**

#### *Music*

This scholarship will be awarded to a music student in the area of sacred music/composition and will be based on scholarship, service and need. Mr. Muntz, an accomplished pianist and organist, has established this scholarship because of his love of music and his understanding of the needs of students.

### **LINDA MURRAY CENTENNIAL FLUTE ENDOWMENT**

#### *Music*

This scholarship will be awarded to an outstanding flute student. Linda Murray was an accomplished musician and instructor of flute at ECU. This scholarship was established in her memory by her husband Duane Murray.

### **D.J. NABORS SPEECH AWARD**

#### *Communication/Performance Studies*

This scholarship will be awarded to an outstanding student with a minimum 2.5 GPA. Three groups will be considered for this award: students who are planning to pursue a profession in which public speaking will be used extensively, students planning to enter the teaching profession, and students who excel in forensic competition. This scholarship was established to honor Dr. Linscheid, who served as ECU's president from 1920-1948 and Dr. Nabors, who was a long-time faculty member at ECU.

### **JESS & TRUDY NANCE EDUCATION SCHOLARSHIP**

#### *Education*

This scholarship will be awarded to an education major who has maintained a minimum 2.7 GPA, has completed at least 36 hours, and has been accepted into the teacher education program. Financial need will also be taken into consideration. The children of Mr. and Mrs. Nance established this scholarship in their memory.

### **E.H. NELSON PSYCHOLOGY SCHOLARSHIP**

#### *Psychology*

This scholarship will be awarded to assist with the purchase of books for a psychology major. Dr. Nelson was a longtime member of the psychology faculty and this scholarship was established in his honor and memory.

### **DONNIE & SHIRLEY NERO STUDENT TEACHING AWARD**

#### *Education*

This scholarship will be awarded to a minority education student in his/her semester of student teaching. The Neros have been a very visible influence in Oklahoma higher education and they provide yearly funding to assist a student who will be teaching in the near future.

### **GEORGE NIGH AWARD**

#### *Other*

This scholarship will be awarded to a graduating senior with the highest GPA and will also be based on contribution to ECU and to the community. Governor George Nigh is an ECU alumnus and this scholarship was established in his honor by Julian Rothbaum.

### **MARGARET NIMS CENTENNIAL WRITING SCHOLARSHIP**

#### *English/Languages*

This scholarship will be awarded to an English major of sophomore classification or above who has maintained a minimum 3.0 GPA. Mrs. Nims was a long-time faculty member in the English Department at ECU and this scholarship was established in her honor by family, friends, and colleagues.

### **DON NOBLE & ELMER BROWN BIOLOGY SCHOLARSHIP**

#### *Biology*

This scholarship will be awarded at the discretion of the biology department. Both Dr. Noble and Dr. Brown taught biology for several years at ECU and this scholarship was established after Dr. Noble's death by family, friends, colleagues and former students.

### **NURSING STUDENT AWARD FUND**

#### *Nursing*

This scholarship will be awarded to a junior nursing student with a minimum 3.0 GPA.

### **BRANDON OSBORN & NICOLE TRIBBLE MEMORIAL SCHOLARSHIP**

#### *Incoming Freshmen*

This scholarship will be awarded to an Ada High School student who plans to attend ECU with preference given to a first-generation college student. Brandon and Nicole were killed in a tragic automobile accident while they were students at Ada High School and this scholarship was established in their memories by family and

Through your help, I am able to attend college, and accomplish a lifelong dream of mine. I've worked so hard throughout High School, to one day get to attend college, and become the first in my family to do so.

Laney Deaton  
Allen, Okla  
Accounting



**Thank you!**

friends. The recipient will be selected by Ada High School administrators.

**DR. CARL OSBORN  
MEMORIAL SCHOLARSHIP**

*Biology*

This scholarship is awarded to a student planning to attend medical school and who has maintained a cumulative 3.0 GPA. Dr. Osborn was a longtime member of the Ada medical community and this scholarship was established by his family, friends and colleagues in his memory.

**BILL & BETTY PARHAM  
CENTENNIAL BUSINESS  
ADMINISTRATION ENDOWMENT**

*Business Administration*

This scholarship will be awarded at the discretion of the department. Established after the death of Bill Parham, this scholarship was funded by Betty Ely Parham, an ECU alumna and longtime member of the Ada community.

**OSCAR L. PARKER  
SPANISH SCHOLARSHIP**

*English/Languages*

This scholarship will be awarded at the discretion of the department. Paul Swinford, a former student of Mr. Parker's, established this scholarship in his honor and memory. Mr. Parker was a long-time employee of ECU,

and was also a founding member of the ECU Foundation, Inc. in 1970, and served as its first director.

**OSCAR & KATHRYN PARKER  
MUSIC SCHOLARSHIP**

*Music*

This scholarship will be awarded to music majors in the piano, vocal or instrumental areas based on contribution to the program and above-average academic work. Oscar Parker was a member of an ECU quartet which performed extensively during the 1940's and 1950's, and he was also a founding member of the ECU Foundation, Inc. in 1970.

**JACK PASCHALL CENTENNIAL  
GRADUATE ENDOWMENT**

*Education*

This scholarship will be awarded to a graduate education student at the discretion of the department. Dr. Paschall, longtime faculty member in the Education Department, has been honored by his family, friends and colleagues with the establishment of this scholarship, which was the first graduate scholarship at ECU.

**CARMELITA PAUL  
MATH SCHOLARSHIP**

*Math/Computer Science*

This scholarship will be awarded to a student from Elmore City-Pernell High School who will be attending ECU. Preference will be given to a math major who has maintained a minimum 3.0 GPA during the last two years of high school. This scholarship was established by Harvey Dean in memory of his favorite math teacher.

**DEAN PETERSON  
LEGAL STUDIES SCHOLARSHIP**

*Political Science/Legal Studies*

This scholarship will be awarded to a student who has declared a major in legal studies and who has maintained a minimum 3.0 GPA. Dean Peterson is a longtime member of the Ada legal community and former instructor at ECU. This scholarship was established by her family and friends.

**FRED & MARY PFEFFER  
SCHOLARSHIP**

*Biology, Computer Science, Environmental Health Science, Nursing, Chemistry/Physics*

This scholarship will be awarded to one student in each of the listed categories, requires a minimum 3.25 GPA, and will be awarded for up to eight consecutive semesters

as long as all scholarship requirements are met. The Pfeffers are long-time residents of Ada and have shown tremendous generosity in assisting ECU students.

**PHYSICS CENTENNIAL  
ENDOWMENT**

*Chemistry/Physics*

This scholarship will be awarded at discretion of the physics department.

**RANDALL & SHIRLEY POGUE  
CENTENNIAL MATH ENDOWMENT**

*Math/Computer Science*

This scholarship will be awarded to a junior or senior math student who has maintained a minimum 3.25 GPA. Mrs. Pogue is an ECU graduate with a degree in math who also obtained a pharmacy degree. She and her husband Randall are longtime residents of Ada and they established this scholarship to reward excellence in math.

**EDWARD & ARITA POKORNY  
MEMORIAL SCHOLARSHIP**

*Mass Communication*

This scholarship will be awarded at the discretion of the department.

**HARVEY PRICE  
MEMORIAL SCHOLARSHIP**

*Biology*

This scholarship will be awarded at the discretion of the Biology Department with preference to students who plan to attend veterinary school. Dr. Price was a veterinarian in Ada for several years and he established this scholarship to assist ECU students who follow in his footsteps.

**PUTERBAUGH SCHOLARSHIP**

*Other*

This scholarship will be awarded to an ECU student attending Eastern Oklahoma State College, McAlester campus.

**DR. RAY QUIETT  
CENTENNIAL GERLACH  
COUNSELING ENDOWMENT**

*Human Resources*

This scholarship will be awarded to a junior or senior student who is majoring in counseling and has maintained a minimum 3.0 GPA. Preference will be given to those students who have also maintained a minimum 3.5 GPA in sociology courses. Dr. Quiett was a long-time faculty member at ECU and established this scholarship to reward excellence in counseling.

## **DR. RANIYAH RAMADAN SCHOLARSHIP**

### *Biology*

This scholarship will be awarded to a student who plans to continue scientific research on a graduate level. Dr. Ramadan was an ECU alumna and this scholarship was established by her family after her death.

## **RAMSAY PRE-MED SCHOLARSHIP**

### *Biology*

This scholarship will be awarded at the discretion of the biology department. Dr. Ramsay was a longtime member of the Ada medical community and this scholarship was established by family, friends, and colleagues in his memory.

## **SARA RANDALL MEMORIAL ENGLISH SCHOLARSHIP**

### *English/Languages*

This scholarship will be awarded to a junior or senior English major who has maintained a minimum 3.25 GPA. Ms. Randall was a junior English major at ECU at the time of her death. This scholarship was established in her memory by her family.

## **ANGIE RAY MEMORIAL SCHOLARSHIP**

### *Incoming Freshmen*

This scholarship will be awarded to an Ada High School student who plans to attend ECU. Angie taught in the Ada School system for several years and this scholarship was established by her family and friends in her memory. The recipient will be selected by Ada High School administrators.

## **BILLIE JO REESE MEMORIAL SCHOLARSHIP**

### *Education*

This scholarship will be awarded to a student who has completed at least 60 credit hours, has maintained a minimum cumulative 2.75 GPA or minimum 3.0 GPA in the last 30 hours and has been admitted to the teacher education program. Preference will be given to an education guidance counseling major. Additionally, financial need, personality and desire to learn will be factors in the determination process. Mrs. Reese was a longtime public school teacher in the Ada area and this scholarship was established in her memory by family, friends and colleagues.

*I've been working very hard throughout the semester, and it feels rewarding to be receiving this scholarship. ECU just keeps getting better!*

*Jennifer Swartz  
Ada, Okla  
Family & Consumer Sciences*

## **KENNETH RHYNES BUSINESS ADMINISTRATION SCHOLARSHIP**

### *Business Administration*

This scholarship will be awarded to a student who exhibits an interest in entrepreneurship. Mr. Rhynes was a longtime businessman in Ada and his family provides yearly funding for the awarding of this scholarship.

## **MARTHA (EUBANK) & WALLACE RHYNES CENTENNIAL ENDOWMENT**

### *Foundation*

This scholarship will be awarded to a female student between the ages of 25-45, marital status of widowed or divorced, with at least one dependent. A minimum 3.0 GPA is required, or GED certification is acceptable for an incoming freshman. Mrs. Rhynes is an ECU alumna, teacher and author who established this scholarship in order to assist young women in their pursuit of a higher education. This scholarship will be awarded at the discretion of the Foundation's Scholarship Committee.

## **GRACE HYDER RICHMOND HOME ECONOMICS AWARD**

### *Family/Consumer Sciences*

This scholarship will be awarded to a senior student at the discretion of the department and will be used as assistance in a career search.

## **MILDRED RIDLING SCHOLARSHIP**

### *Education*

This scholarship will be awarded to an

education major with a minimum of 45 completed hours and a minimum 2.75 GPA. Ms. Ridling was a longtime employee of ECU, serving as Dean of Women. This scholarship was established in her honor and memory.

## **ESSIE ROARK COLLEGE OF EDUCATION AND PSYCHOLOGY CENTENNIAL ENDOWMENT**

### *Education, Psychology, Kinesiology*

This scholarship will be awarded to graduate students, who have been unconditionally admitted to their program of Education, Psychology or Kinesiology. The recipients graduate GPA must be a 3.5 or above and he/she must be enrolled in a minimum of three hours of graduate coursework in their program area. This scholarship is awarded at the discretion of the College of Education and Psychology Scholarship Committee or their chosen designee and can be used for fall, spring, and/or summer semesters.

## **ESSIE ROARK COLLEGE OF HEALTH AND SCIENCES CENTENNIAL ENDOWMENT**

### *Biology, Cartography/Geography, Chemistry/Physics, Environmental Science, Family/Consumer Sciences, Math/ Computer Science, Nursing*

This scholarship will be available to all students in the College of Health and Sciences, with priority given to students pursuing a master's degree in a discipline housed in the College of Health and Sciences at the time of the award. The recipient must maintain a minimum 3.5 GPA and be classified as a junior or above. To receive this scholarship, applicants must provide a plan for a research project that will be completed during their junior year and that is verified by a mentoring faculty member. Preference will be given to students providing evidence of research with mentoring faculty during their freshman/sophomore year(s). For the scholarship to be renewed during the students' senior year, they must complete a research project in collaboration with mentoring a faculty member during their junior year or the student must have presented previous research at a state, regional, national or international conference during their junior year and provide an acceptable update for the current research project.



**ESSIE ROARK  
COLLEGE OF LIBERAL ARTS AND  
SOCIAL SCIENCES CENTENNIAL  
ENDOWMENT**

***Human Resources***

This scholarship will be awarded to graduate students pursuing a master of science in Human Resources. The recipients graduate GPA must be a 3.5 or above and he/she must be enrolled in a minimum of three hours of graduate coursework in their program area. Financial need will also be a consideration.

**ESSIE ROARK  
STONECIPHER SCHOOL OF  
BUSINESS CENTENNIAL  
ENDOWMENT**

***Accounting, Business Administration***

This scholarship will be awarded to a student(s) who serves in the Stonecipher School of Business student organization as an officer in the Business Leaders Association (BLA). BLA officers are elected by the student members and serve one year terms. In addition to the scholarship, the student will be expected to volunteer time, working in the BLA office, supporting the Stonecipher School of Business and the student organizations in a leadership role. Student members in BLA elect officers each February. The dean of the Stonecipher School of Business will select the officer(s) to receive this scholarship, based on elected position, need, available volunteer schedule and leadership potential.

**ANITA J. & W. DEAN ROBINSON  
SCHOLARSHIP**

***Biology***

This scholarship will be awarded to a student majoring in biology, chemistry, computer science, environmental science, math or physics. Chris Smith, an ECU alumnus, established this scholarship in honor and memory of his aunt and uncle.

**JULIAN ROTHBAUM  
MEMORIAL SCHOLARSHIP**

***Political Science/Legal Studies***

This scholarship will be awarded to at the discretion of the department. This scholarship was established in honor and memory of Mr. Rothbaum by his family, friends and colleagues.

**PAULA RUTLEDGE CENTENNIAL  
MATH EDUCATION (SECONDARY)  
MEMORIAL ENDOWMENT**

***Math/Computer Science***

This scholarship will be awarded to a secondary math education major who has maintained a minimum 3.25 GPA. Special consideration will be given to female students who exhibit financial need. This scholarship was established by Dr. Carl Rutledge in memory of his wife Paula, who was a math teacher at both the secondary and university levels.

**JAMES SAIED  
BAND SCHOLARSHIP**

***Music***

This scholarship will be awarded to students who have shown the most progress during the current academic year. Consideration will be given to the student's character, personality and general contribution to the music program. Mr. Saied graduated in 1936 and was honored as a Distinguished Alumnus in 1990.

**SBC SCHOLARSHIP**

***Biology***

This scholarship will be awarded to minority students in the areas of math, science or engineering. Originally established by Southwestern Bell, this organization has been contributing to the ECU Foundation since 1993 and this scholarship was established with proceeds from a grant awarded in 1999.

**FRANCES & ELIZABETH  
SCHMELLING SCHOLARSHIP**

***Nursing***

This scholarship will be awarded at the discretion of the department. Dr. Stephen Schmelling established this scholarship in memory of his wife Elizabeth and her mother Frances. Both were nurses and Elizabeth was a longtime faculty member at ECU.

**TONY A. & ROBBIE F. SCOTT  
SCHOLARSHIP**

***Accounting***

Recipients of this scholarship will be selected by the dean of the ECU School of Business and will be fulltime junior or senior students from Pontotoc County, Oklahoma, who are attending the ECU School of Business. Preference will be given to an accounting major and financial need will also be a consideration.

**DIANA SHANNON CENTENNIAL  
EDUCATION ENDOWMENT**

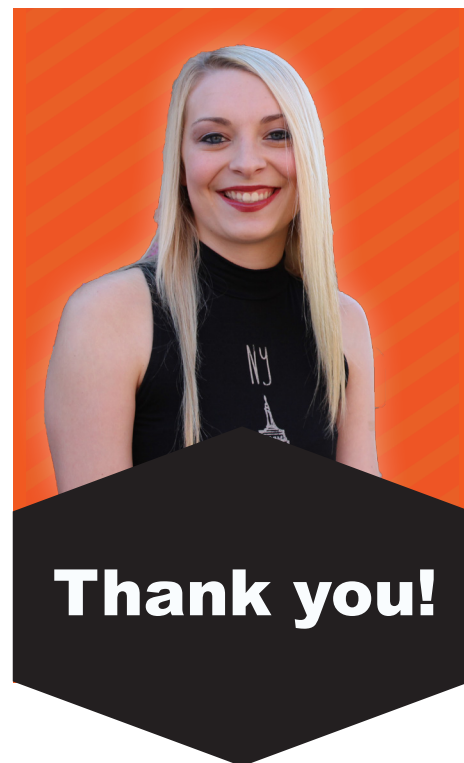
***Education***

This scholarship will be awarded to students who have graduated from or who are currently teaching in the public school systems in Murray or Garvin counties who are library media or reading specialists or who are seeking a degree in either area. If there are no eligible recipients, the scholarship can be awarded to students who are working toward a master of education who have graduated from or who are currently teaching in the same public school systems. If there are no eligible students according to these guidelines, the scholarship will be awarded at the discretion of the department. Mrs. Shannon was a longtime educator and this scholarship was established by her family, friends, and colleagues in her memory.

**JOE & JUNE SIMS CENTENNIAL  
CARTOGRAPHY/GEOGRAPHY  
ENDOWMENT**

***Cartography/Geography***

This scholarship will be awarded to a junior or senior cartography major who possesses the highest grade point average weighted as follows: two-thirds weight for courses taken in the ECU Department of Cartography and Geography and one-third weight over the remaining ECU courses. Dr. Sims was a longtime faculty member at ECU and this scholarship was established in his memory by family, friends and colleagues.



I have always loved to create stories, but I have struggled with confidence in my writing. Thanks to this scholarship, I have received the financial support I need to utilize my passion and achieve confidence in my writing abilities.

Taylor Johnson  
Allen, Okla.  
English

### **CECIL SMITH & SELMA GLADDEN SCHOLARSHIP**

#### *Foundation*

This scholarship will be awarded to Pontotoc County students who plan to attend ECU. The student must have a minimum 3.0 GPA and a minimum ACT score of 22. The Smith's son Kenneth established this scholarship in his parents' memory for financial and academically deserving students from Pontotoc County. This scholarship will be awarded at the discretion of the Foundation's Scholarship Committee.

### **JOANN & EDWARD SMITH PHYSICS SCHOLARSHIP**

#### *Chemistry/Physics*

This scholarship will be awarded to a student enrolled in the medical physics program. This scholarship was established in honor and memory of the Smiths and is funded yearly by family members.

### **LEON POLK SMITH ART SCHOLARSHIP**

#### *Art*

This scholarship will be awarded to students majoring in art based on artistic and creative potential, financial need and departmental

contribution. There will be an annual award for each classification (freshman, sophomore, junior, senior). Mr. Smith was an ECU alumnus who gained international fame as an artist. This scholarship was established by his family, friends and colleagues.

### **SOCIOLOGY DEPARTMENT ENDOWMENT**

#### *Sociology*

This scholarship will be awarded to a junior or senior student with a declared major in Sociology. The recipient must maintain a GPA of 2.5 or above and attend ECU as a fulltime student.

### **ST. JOSEPH PARISH SCHOLARSHIP**

#### *Incoming Freshmen*

This scholarship will be awarded to students who are members of St. Joseph Parish and are certified as regular participants in the Parish Religious Education Program. This scholarship was established by members of St. Joseph Parish.

### **DR. DON STAFFORD CENTENNIAL ENDOWMENT**

#### *Biology*

This scholarship will be awarded to an outstanding student in the sciences. Dr. Stafford was a longtime professor at ECU and this scholarship was established by his sons in his honor and memory.

### **NIKKI STONECIPHER MEMORIAL SCHOLARSHIP**

#### *Incoming Freshmen*

This scholarship will be awarded to an incoming freshman from the Tupelo area, and to other students if this guideline cannot be met. This scholarship can be ongoing for eight semesters. This scholarship was established by Harland and Shirley Stonecipher after the tragic deaths of their son, daughter-in-law, and granddaughter Nikki in an airplane accident. Ongoing support is provided by the annual Nikki Stonecipher Memorial Golf Tournament.

### **STRINGFIELD CENTENNIAL PHYSICS ENDOWMENT**

#### *Chemistry/Physics*

This scholarship will be awarded at discretion of the physics department. Mr. Stringfield is an ECU alumnus who has established this scholarship to assist students who are obtaining a degree in physics.

### **SELMA (CODY) STRUNK SCHOLARSHIP**

#### *Human Resources*

This scholarship will be awarded to a graduate student majoring in Human Resources. Additional guidelines may be obtained from the department.

### **STUDY IN FRANCE SCHOLARSHIP**

#### *Global Education*

This scholarship will be used to assist students when traveling to France.

### **BERTHA & MYRTLE STURDEVANT SCHOLARSHIP**

#### *Accounting, Business Administration*

This scholarship will be awarded to fulltime ECU students who are employed by the Stonecipher School of Business as a student employee. Preference is given to those with the greatest financial need for the scholarship at the time of the award. Preference is also given to those with a 3.0 GPA or higher and classification of junior or senior. This scholarship may be given to a student with a GPA lower than a 3.0 and/or a classification of freshman or sophomore based on financial need. The recipient will be selected by the Stonecipher School of Business Scholarship Committee or their designee. This scholarship is funded by Lynda K. Simpson, who has a long history with ECU and is thankful for the education she received from the School of Business. Bertha and Myrtle Sturdevant were professors in Business Education.

### **SUKHOLUTSKAYA FAMILY RUSSIA TRAVEL FUND**

#### *Global Education*

This scholarship will be used at the discretion of the English/Languages department and the Global Education Committee. Dr. Sukholutskaya is a longtime ECU faculty member and this scholarship was established in memory of her mother.

### **DOROTHY I. SUMMERS SCHOLARSHIP**

#### *Communication/Performance Studies*

This scholarship will be awarded to an outstanding theatre student with preference to excellence in technical theatre work. Dr. Summers was a longtime faculty member at ECU and this scholarship was established in her honor and memory by family, friends and colleagues.

## CLEO SUMTER SCHOLARSHIP

### *Music*

This scholarship will be awarded at the discretion of the department. Ms. Sumter was an ECU alumna and established this scholarship as part of her estate planning.

## VIRGIL TAYLOR CENTENNIAL VOCATIONAL REHABILITATION ENDOWMENT

### *Criminal Justice/Vocational Rehabilitation*

This scholarship will be awarded to a senior majoring in Human Service Counseling with a concentration in Rehabilitation or Services to the Deaf. The student must maintain a minimum 3.0 GPA and must submit an essay describing his/her desire and willingness to work in the field of rehabilitation and with individuals with disabilities. Mr. Taylor was an ECU alumnus who excelled in the area of vocational rehabilitation. This scholarship was established in his memory by family, friends and colleagues. It is supported on a yearly basis by the Virgil Taylor Golf Tournament.

## JESS TEAGUE SCHOLARSHIP

### *Incoming Freshmen*

This scholarship will be awarded to a student from Byng High School who will be attending ECU. This scholarship was established by friends and colleagues of longtime Byng basketball coach Bertha Frank Teague after the death of her husband Jess.

## DARRELL TERRELL MATH SCHOLARSHIP

### *Math/Computer Science*

This scholarship will be awarded to freshman and sophomore math students at the discretion of the department. This scholarship was established in honor of Darrell Terrell, longtime faculty member in the math department.

## BERTHA THOMAS FAMILY SCHOLARSHIP

### *Foundation*

This scholarship will be awarded at the discretion of the Foundation Scholarship Committee to students from the Quinton, Poteau or Wewoka, Oklahoma geographic areas, who graduate in the upper 1/3 of their high school graduating class. The recipient must have a high school GPA of 3.0 or above and be a fulltime student at East Central University. This scholarship will be awarded at the discretion of the Foundation's Scholarship Committee.

## CHURCHILL THOMAS & MELBA THOMAS KING HONORS SCHOLARSHIP

### *Other*

This scholarship will be used for awards to students who have successfully completed the ECU Honors Program.

## DR. JAMES A. THOMAS, SR. SCHOLARSHIP

### *Biology*

This scholarship will be awarded to a student who is planning to attend dental school and who has maintained a minimum 3.0 GPA, with preference to students from Poteau, Quinton, Wetumka or Ada. Dr. Thomas was a longtime dentist in Ada, and also served as the Foundation's Executive Director. This scholarship was established by his family, friends and colleagues in his memory.

## COLONEL TOM A. THOMAS MEMORIAL SCHOLARSHIP

### *Human Resources*

This scholarship will be awarded to a qualified MSHR graduate student who has completed at least 12 hours at ECU in the MSHR program with a cumulative GPA or 3.5, with preference to applicants from the administration options. Applicants should possess leadership qualities and have strong potential to make a positive and lasting impact in the public sector service. This scholarship will also be awarded to a Department of Human Resources

undergraduate student who is at the junior or senior level and has maintained a cumulative GPA of 3.5. Additionally, applicants must have completed at least 12 hours at ECU in their program with a GPA of 3.5. Students from the outreach sites are also eligible to apply for this scholarship. Funds for this scholarship were provided by Colonel Tom A. Thomas, who also established a chair in Human Resources.

## JAMES & EDITH THOMPSON SCHOLARSHIP

### *Education*

This scholarship will be awarded to a student majoring in elementary education. The recipient will be a fulltime ECU student with a 3.0 GPA or above. Mr. and Mrs. Thompson both have education degrees from ECU.

## GRANT THORP CENTENNIAL ENDOWMENT

### *Art*

The recipient of this scholarship will be an art major with a cumulative GPA of 2.75 or a GPA of 3.0 in the last 30 hours. Selection will be based on academic record and non-academic related community service. Mr. Thorp was an art professor at ECU and this scholarship was established by his family, friends and colleagues after his untimely death in 1994.

## THORPE-WHITE SCHOLARSHIP

### *Athletics*

This scholarship will be awarded to a Native American male (CDIB required) who is active in athletics on the college level. This was established by Louzelle Thompson White Malcom in memory of Jim Thorpe, a student of her husband Charles Walter White who taught in Garden Grove School (east of Shawnee, Oklahoma).

## JOANNE TODD & ADAM LAMBERT MUSIC SCHOLARSHIP

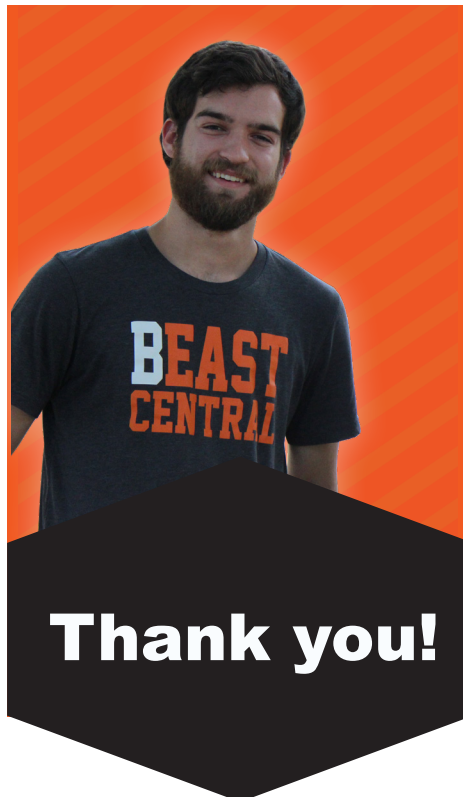
### *Music*

This scholarship will be awarded to an outstanding music student at the discretion of the department. Mrs. Todd was an excellent longtime supporter of the arts and this scholarship was established in her memory by a close friend.

## CHARLES TRACY MUSIC AWARD

### *Music*

This scholarship will be awarded to a music major excelling in scholastic achievement in the areas of music theory and music history. Mr. Tracy was a former professor at ECU and





an excellent pianist. This scholarship was established in his memory by friends, family and former students.

### **ALINE K. TRISLER MUSIC SCHOLARSHIP**

#### *Music*

This scholarship will be awarded to an outstanding music student as determined by the department.

### **JOE M. TURNER CENTENNIAL MEMORIAL BUSINESS ADMINISTRATION ENDOWMENT**

#### *Business Administration*

This scholarship will be awarded at the discretion of the Business Administration department. Mr. Turner graduated from ECU in 1971 and became an IRS agent. He later became a special agent for the Treasury Department. The Joe Turner Justice Wing in the Chickasaw Business and Conference Center was funded by his son Kevin Turner. Kevin also funded this scholarship in honor of his father.

### **KEN TURMER CENTENNIAL ATHLETIC ENDOWMENT**

#### *Athletics*

This scholarship will be awarded at the discretion of the department.

### **KEVIN TURNER BUSINESS ADMINISTRATION SCHOLARSHIP**

#### *Business Administration*

This scholarship will be awarded at the discretion of the Business Administration Department. Mr. Turner is an ECU alumni and well-known businessman. He established this scholarship to assist students who are pursuing a degree in business administration.

### **DR. JOHN J. ULRICH POLITICAL SCIENCE SCHOLARSHIP FOR PUBLIC SERVICE**

#### *Political Science/Legal Studies*

This scholarship will be awarded to a student majoring in political science or legal studies, with public service as the main requirement. This scholarship was established in Dr. Ulrich's memory by ECU alumni Kyle and Kendall Foster who stated, "He made a big impact on us and we think he was an incredible example of someone who led a life dedicated to public service."

### **VALLEY VIEW HOSPITAL SCHOLARSHIP**

#### *Nursing*

This scholarship will be awarded at the discretion of the department.

### **VISION BANK BUSINESS ADMINISTRATION SCHOLARSHIP**

#### *Business Administration*

This scholarship will be awarded at the discretion of the Business Administration Department.

### **JUSTIN & MARGUERITE VOGT SCHOLARSHIP**

#### *Incoming Freshmen*

This scholarship is awarded to Byng High School students who will be attending ECU. This scholarship was established by the Vogts in honor of Bertha Frank Teague, Wayne Lillard, and Marvin Stokes.

### **BILL WALDEN BUSINESS ADMINISTRATION SCHOLARSHIP**

#### *Business Administration*

This scholarship will be awarded at the discretion of the Business Administration Department. Mr. Walden was a longtime faculty member in the School of Business and this scholarship has been established in his honor by family and friends.

### **RUTH LANDRUM WALKER CENTENNIAL SCULPTURE ENDOWMENT**

#### *Art*

This scholarship will be awarded to an outstanding art student who excels in sculpture. This scholarship has been established by the family of Mrs. Walker-Landrums in recognition of her contribution to ECU as an art instructor.

### **STEVE WALKER MUSIC SCHOLARSHIP**

#### *Music*

This scholarship will be awarded at the discretion of the music department or may be used for travel expenses for the ECU Chorale. Dr. Walker has been a long-time professor at ECU and has excelled in the area of vocal music. This scholarship was established by a close friend and fellow music enthusiast.

### **OZELLA ELIZABETH WANER ENGLISH SCHOLARSHIP**

#### *English/Languages*

This scholarship will be awarded to an incoming freshman who plans to major or minor in English and can be continued for eight semesters if all guidelines are met. A minimum GPA of 3.25 is required for the continuation of this scholarship. Ms. Waner was house mother for several years to residents of Fentem Hall. This scholarship was established in her honor and memory by her daughter and son-in-law, Eleanor and Burt Dedmon.

My education has always been of the utmost importance to me, and I have strived to do and be my absolute best in order to ensure my academic future. Coming from a family that has struggled financially my entire life, scholarships and other forms of financial aid are the only ways that I am able to pursue a college degree, something that has always been a dream of mine.

**Brianna Hood**  
Tishomingo, Okla  
Human Resources Counseling

## **BRON WARREN MEMORIAL SCHOLARSHIP**

### *Music*

This scholarship will be awarded at the discretion of ECU's band director. Bron Warren was an ECU alumni and an accomplished musician. This scholarship was established by his family and friends, and is supported annually through a regional band contest, "Tigerpalooza."

## **WES WATKINS WATER RESOURCE POLICY AND MANAGEMENT SCHOLARSHIP**

### *Water Resource Policy & Management*

This scholarship will be awarded to a student in the master's program for Water Resource Policy and Management or an undergraduate student who is planning to join the Water Resource Policy and Management program upon graduation. The recipient will be a fulltime ECU student with a cumulative GPA of 3.0 or above. The recipient will be chosen by the Water Resource Policy and Management Advisory Board or its designee and the chair of the Department of Political Science.

## **A.T. & ETHEL WATSON FAMILY SCHOLARSHIP**

### *Political Science/Legal Studies*

This scholarship will be awarded to an incoming freshman at ECU, and may be awarded for multiple semesters. The recipient must have a minimum 3.0 GPA with a declared major of political science or legal studies. Financial need will be a consideration. This scholarship was originally established by Doris McCoy and has been supplemented by friends and colleagues.

## **WATSON FAMILY CENTENNIAL FCS ENDOWMENT**

### *Family/Consumer Sciences*

This scholarship will be awarded to an ECU student with a declared major of family and consumer sciences, and preference will be given to those who major in family and consumer sciences education. The recipient will be a sophomore or junior classification with 35-89 university hours completed and has maintained a minimum 2.8 cumulative GPA. Scholastic accomplishments, organizational and service activities, work experience, statement of need and career goals in the field of family and consumer sciences education will be required with the official application. Established by Dr. Diana Watson-Maile and her family, this scholarship honors excellence in family and consumer sciences.

## **GLENN WATSON CENTENNIAL GRADUATE ACCOUNTING ENDOWMENT**

### *Accounting*

This scholarship will be awarded to a graduate student in the accounting masters' degree program, and was established in his memory by family and close friends. Mr. Watson was born and raised in Ada and a longtime member of the legal profession.

## **REED LOVING WATT SCHOLARSHIP**

### *English/Languages*

This scholarship will be awarded to an English/Languages student who has earned at least 12 semester hours of credit and has maintained a minimum 3.0 GPA. This scholarship was established with the proceeds from the sale of property donated by the Watt family to the Oklahoma State Board of Regents.

## **JOE WEBER & JERRY RAPER CENTENNIAL ATHLETIC ENDOWMENT**

### *Incoming Freshmen*

This scholarship will be awarded to a Davis High School athlete who will be attending ECU. Coaches Weber and Raper were honored with this scholarship by Jay Horne, whose son played football for Coach Raper.

## **JUDITH WHOMBLE CENTENNIAL INTERNATIONAL STUDENT ENDOWMENT**

### *Global Education*

This scholarship will be awarded by ECU's Global Education Committee. Mrs. Whomble was very involved with the international student community at ECU and this scholarship was established by friends, family and colleagues in her honor and memory.

## **DR. DENNIS & ELSIE WILLIAMS MATH SCHOLARSHIP**

### *Math/Computer Science*

This scholarship will be awarded at the discretion of the department. Dr. Williams was a longtime faculty member at ECU and this scholarship was established in his honor and memory.

## **DR. GERALD WILLIAMSON CENTENNIAL BUSINESS ADMINISTRATION ENDOWMENT**

### *Business Administration*

At the discretion of the dean of the Stonecipher School of Business, this fund will be used for student development

opportunities, such as educational trips, internship support or team building events. This fund can also be used for scholarships, with the emphasis on an upper division student that has or will be representing the university via business competitions, athletics, Greek leadership or campus activity involvement. Dr. Williamson, former faculty member in the school of business and vice-president for student development, was honored with this fund provided by his former students.

## **BEATRICE WISEHART SPANISH SCHOLARSHIP**

### *English/Languages*

This scholarship will be awarded at the discretion of the department. This scholarship was established by Ms. Wisheart's daughter Susan Little.

## **NATASHIA WRIGHT MEMORIAL SCHOLARSHIP**

### *Criminal Justice/Vocational Rehabilitation*

This scholarship will be awarded at the discretion of the department. Ms. Wright completed Oklahoma's first Police Corps Academy at ECU in 2001, joined the Ada Police Department in October 2001 and was killed in a car accident in November 2002. This scholarship was established after her death by her family, friends and colleagues.

## **YOUNG FAMILY CENTENNIAL ENGLISH ENDOWMENT**

### *English/Languages*

This scholarship will be awarded to an English major who has completed a minimum of 59 semester hours. Barbara Young taught for several years in the English Department and this scholarship was established by her family and friends in her honor.

## **J.W. & CLARA ZIMMERMAN SCHOLARSHIP**

### *Education*

This scholarship will be awarded to an education major who is a sophomore or higher and who exhibits financial need. Mr. Zimmerman was the first person to obtain a master's degree at ECU and this family has had a very visible influence on higher education in Oklahoma. This scholarship was established by family, friends and colleagues in honor and memory of both J.W. and Clara Zimmerman.

# ENDOWMENT OPTIONS

## For chairs, professorships and lectureships

*ECU's alumni and other supporters have created endowments at the Foundation to help recruit and maintain faculty members and aid the University in other ways in the form of Chairs, Professorships, and Lectureships. The minimum monetary gift for a Chair is \$250,000; for a professorship is \$125,000; and for a Lectureship is \$25,000. Once these are matched dollar for dollar by the Regents, interest from these gifts benefit the University in perpetuity to assist in academic endeavors and to enhance the academic programs of the University.*

### ENDOWED CHAIRS

Robert S. Kerr Endowed Chair in Environmental Health Science  
Thomas A. Thomas Endowed Chair in Human Resources  
Valley View Regional Hospital Endowed Chair in Nursing  
East Central University Endowed Chair in Nursing  
Gene A. Nelson Endowed Chair in Business  
Sadie Knotts/McCasland Endowed Chair in Nursing  
Chickasaw Nation Endowed Chair in Native American Studies  
Hallie Brown Ford Endowed Chair in Fine Arts

### ENDOWED LECTURESHIPS

Marvin Stokes Endowed Lectureship in Education  
Leonard Limes Endowed Lectureship in Entrepreneurship  
Julian Rothbaum Endowed Lectureship in Public Affairs Policy  
Lou Watkins Endowed Lectureship in Political Science  
R. Darryl Fisher Endowed Lectureship in Writing & Scholarship  
George Nigh Endowed Lectureship in Government  
Shirley Pogue Endowed Lectureship in Business  
David A. Lockmiller Endowed Lectureship in Art History  
Vinita June (Shirley) Oliver Centennial Fine Arts Lectureship  
Stanley P. & Diana M. Wagner University Chorale Lectureship  
Jim Gray Center for Student Excellence Lectureship  
Morgan Family Foundation Cartography Lectureship  
Jane Muntz Music Lectureship  
Stringfield Physics Lectureship—Equipment  
Stringfield Physics Lectureship—Travel  
Parker Ethics Center Endowed Lectureship  
Dr. Louise Young Diversity Lecture

### ENDOWED PROFESSORSHIPS

Adolph Linscheid Endowed Distinguished Teaching Professorship  
Crabtree Family Endowed Professorship in Business  
Choctaw Nation Endowed Professorship in Nursing  
Tom and Diane Criswell Endowed Professorship in Nursing  
Chickasaw Nation Endowed Professorship in Accounting  
Horne and Company Endowed Professorship in Accounting  
Vision Bank Endowed Professorship in Banking and Finance  
Chickasaw Nation Endowed Professorship in Business Admin.  
S.C. Boswell Endowed Distinguished Professorship in Business

### CENTENNIAL ENDOWMENTS

*This term was developed in 2009 which was ECU's Centennial year. Dr. Duane C. Anderson, provost and vice president for academic affairs, was serving as interim president that year. He challenged the University and the departments to raise five \$15,000 scholarships which would be called "Centennial Endowments" in honor of ECU's 100th birthday. A total of 21 centennial endowments were established that year for a total of \$455,000!*

**2009      21 ENDOWMENTS      TOTALING \$455,000**

Centennial Athletics Endowment  
Margaret Nims Centennial Writing Endowment  
Wanita Danley Centennial Honors Endowment  
Dr. John Bulman Centennial Endowment  
Ivan & Mary Jo Keatley Centennial Endowment  
Watson Family Centennial Family & Consumer Sciences Endowment  
Dr. Tom Cowger Centennial Native American Studies Endowment  
1950's Science Fund Centennial Endowment  
Geraldine Kerr Centennial Music Endowment  
Louise Young Centennial Diversity Endowment  
Dr. William C. Chapman Centennial Accounting Endowment  
GLBT Centennial Diversity Endowment  
Dr. Barbara A. McKinzie Centennial Accounting Endowment  
Dr. Ronald D. & Estelle E. Evans Centennial Education Endowment  
Horace Mann Society Centennial Endowment  
Carl Bardin Centennial Accounting Endowment  
Ladonne Latimer Centennial Endowment  
Lee Horne Centennial Endowment  
Grant Thorp Centennial Endowment  
Young Family Centennial Endowment  
Jack Paschall Centennial Graduate Endowment

**The Strength of any University lies in its students, faculty and staff and the tremendous support of alumni.**



**2010 12 ENDOWMENTS TOTALING \$295,000**

Donald G. Stafford Centennial Endowment  
Dennis Boe Centennial Music Endowment  
Gil & Jeanine Morgan Centennial Endowment  
Mary Demke Girls' State Centennial Endowment  
Masonic Charity Foundation of Oklahoma Centennial Endowment  
Ada High School Class of 1970 Centennial Endowment  
Stringfield Centennial Physics Endowment  
Vinita June (Shirley) Oliver Centennial Endowment  
Ada Artists' Association Loretta Yin Centennial Endowment  
Trease Layton Centennial Family & Consumer Science Endowment  
Physics Centennial Endowment  
Bron Warren Centennial Memorial Endowment

**2011 10 ENDOWMENTS TOTALING \$250,000**

Glenn Watson Centennial Graduate Accounting Endowment  
Molly Shi Boren Centennial Endowment  
Bob Bennett Centennial Fine Arts Endowment  
Mick Cowan Centennial Accounting Endowment  
Dr. Tim Green Centennial Education Endowment  
Bill & Betty Parham Centennial Business Administration Endowment  
President Emeritus Bill & Sondra Cole Centennial Biology Endowment  
R. Burl Harris Centennial Legal Studies Endowment  
Duane Godwin Centennial Memorial Endowment  
Weber/Raper Centennial Athletic Endowment

**2012 11 ENDOWMENTS TOTALING \$260,000**

Gary & Linda Ainsworth Centennial Russia Travel Endowment  
John & Mary Ross Centennial SHARE Endowment  
Judy Crabtree Centennial Psychology Endowment  
Citizens' Bank Centennial Business Endowment  
Virgil Taylor Centennial Rehabilitation Endowment  
Dr. Gerald Williamson Centennial Endowment  
Once a Tiger/Always a Tiger Centennial Endowment  
Linda Murray Centennial Flute Endowment  
Ruth Walker Landrum Centennial Sculpture Endowment  
Millsap Centennial Endowment for Health Professionals  
Dr. James Harris Centennial CLASS Endowment

**2013 12 ENDOWMENTS TOTALING \$225,000**

Frank & Ruth Kennon Centennial Athletic Endowment  
Dr. Duane & Marian Anderson Centennial Endowment  
Randall & Shirley Pogue Centennial Math Endowment  
Francis G. Mayhue Centennial Legal Studies Endowment - Sophomore  
Francis G. Mayhue Centennial Legal Studies Endowment - Junior  
Francis G. Mayhue Centennial Legal Studies Endowment - Senior  
Judy Carroll Centennial Memorial English Endowment  
Dr. Ray Quiett Centennial Gerlach Counseling Endowment  
Morgan Family Foundation Centennial Music Endowment  
Madeline Hargrave Centennial Education Endowment  
Jane Muntz Centennial Music Endowment  
Paula Rutledge Centennial Secondary Math Education Endowment

**2014 14 ENDOWMENTS TOTALING \$360,340**

Charles & Lila Acker Centennial Math Endowment  
Jerry Anderson Centennial Memorial Athletic Endowment  
Leon & Wanda Bidy Centennial Memorial Endowment  
Robert D. Coleman Centennial Memorial Endowment  
Commitment to Championships Centennial Endowment  
Justice Rudolph Hargrave Centennial Legal Studies Endowment  
Alan & Anita Holloway Centennial Accounting Endowment  
Chris Lane Centennial Athletic Endowment  
W.E. & Minnie Martin Centennial Book Endowment  
Martha Eubank/Wallace Rhynes Centennial Endowment  
Diana Shannon Centennial Memorial Education Endowment  
Joe & June Sims Centennial Cartography/Geography Endowment  
Ken Turner Centennial Athletic Endowment  
Judith Whomble Centennial International Student Endowment

**2015 22 ENDOWMENTS TOTALING \$1,090,700**

Ruben and Karla Elizarde Centennial Athletic Endowment  
Leon and Pauline Lanoy Centennial Graduate Education Endowment  
Daniel Minnich Centennial Memorial Student Teaching Endowment  
Essie Roark Centennial Memorial Music Endowment  
Delta Dental of OK Oral Hlth Fndtn Centennial Pre-Dental Endowment  
Bridges-Burke Centennial Social Work Endowment  
Ray Farmer Centennial Memorial Endowment  
DCT College of Health and Sciences Centennial Endowment  
DCT CLASS Centennial Endowment  
DCT College of Ed and Psy Centennial Endowment  
DCT Stonecipher School of Business Centennial Endowment  
Essie Roark College of Health and Sciences Centennial Endowment  
Essie Roark CLASS Centennial Endowment  
Essie Roark College of Ed and Psy Centennial Endowment  
Essie Roark Stonecipher School of Business Centennial Endowment  
Joe M. Turner Centennial Business Administration Endowment  
Janie Howell Centennial Memorial Endowment  
Chickasaw Nation Centennial Technology Professionals Endowment  
Dr. John Densford Centennial Award for Excellence Endowment  
Chickasaw Nation Centennial Nursing Professionals Endowment  
Dr. Wendell Altmiller Centennial Education Endowment  
Dr. Terry Cluck Centennial Tri-Beta Biology Endowment

**2016 5 ENDOWMENTS TOTALING \$75,000**

Cottingham/Ross Centennial Graduate Education Endowment  
Leadership Murray County Class XII Centennial Endowment  
Charles & Lila Acker Centennial Computer Science Endowment  
Jim & Jo Conway Centennial Student Development Endowment  
Jon Arrasmith Centennial Memorial Endowment

*Thank You!*

**2009-2016 CENTENNIAL ENDOWMENTS**

**107 TOTAL \$3,011,040**

# LIFETIME GIFTS

## Callixylon Society

### \$10,000 - \$500,000+ Lifetime Gifts

*Giving levels in the Callixylon Society have been established to recognize the contributions of the individuals, corporations and organizations who through their total lifetime gifts provide support for the enhancement of the University.*

#### Diamond Level

**\$500,000+**

Eleanor Dedmon  
Hallie Brown Ford  
Dorothy Higginbotham  
Louise Hornbeak  
Randall & Shirley Pogue  
Harvey Price  
Harland & Shirley Stonecipher  
Kevin & Shelley Turner

#### CORPORATIONS

Ada Coca-Cola Bottling Company  
Briles Scholarship Fund  
Chickasaw Nation Division of Commerce  
Ford Family Foundation  
Inasmuch Foundation  
Oregon Community Foundation  
Sarkey's Foundation

#### Platinum Level

**\$100,001 - \$500,000**

Kay Adair  
Elizabeth Blakesly  
John & Semira Charboneau  
Thomas & Diane Criswell  
J.H. Criswell  
Raymond Estep  
James Gray  
Eugene Hensley  
Tommy & Cheryl Hewett  
Bill & Twyla Horne  
Lee & Judy Horne  
Leon & Mary "Pauline" Lanoy  
Ayleene McKeel  
Gene & Jimmie Nelson  
Fred & Mary Pfeffer  
Tawfik & Siham Ramadan

Patricia Richard  
Bryan & Christina Roark  
Craig & Christy Scheef  
Stephen Schmelling & Carlotta Lockmiller  
Kenneth & Twyla Smith  
Michael & Karen Smith  
Wilburn & Carol Smith  
James "Mark" & Melinda "Susie" Stringfield  
Dorothy Summers  
Thomas & Marge Thomas  
William "Bill" & Billie Thrash  
Albert Watson  
Reggie & Rachelle Whitten  
Sterling & Barbara Williams  
Louise Young & Vivienne Armstrong

#### CORPORATIONS

Ada Elk's Lodge #1640  
Childrens Reading Charitable Trust  
Choctaw Nation of Oklahoma  
Citizens Bank of Ada  
City of Ada  
Devon Energy Corporation  
Estate of Essie Roark  
Estate of Mark Landrum  
Ethics and Excellence in Journalism Foundation  
Farnham Family Trust  
Home Title Guaranty Co  
Kellogg & Sovereign Consulting, LLC  
Kerr Foundation, Inc  
McCasland Foundation  
Mercy Hospital of Ada  
Oklahoma City Community Foundation  
Oklahoma Gas and Electric Foundation  
Sciences & Natural Resources Foundation  
Texoma Health Foundation  
Valley View Health and Wellness Foundation  
Valley View Hospital  
Vision Bank of Ada

#### DISCLAIMER FOR DONOR LISTS

These lists report cumulative gifts made from July 1, 2016 through June 30, 2017. Despite our best efforts, errors and omissions sometimes occur in the creation of these lists. If your information is omitted or listed incorrectly, please accept our apology and contact the Foundation as soon as possible so that we can make corrections.

# Gold Level

**\$25,001 - \$100,000**

Charles & Lila Acker  
Gary & Linda Ainsworth  
Jay Allbaugh  
Duane & Marian Anderson  
Nathan & Linda Atchison  
Bob & Sally Bennett  
Roland & Judy Alexander  
Boreham  
William "Bill" & Twyla  
Bridgewater  
Michael & Emily Brown  
Slover & Louise Cape  
Martin Clark  
Bill & Sondra Cole  
Jack & Helen Conn  
Bobby & Edna Cooley  
Blake & Erin Crabtree  
Tom & Darlene Crabtree  
James & Glenna Cranford  
Frank & Cindy Crawford  
Michael & Debbie Crawford  
Denver & Victoria Davison  
Harvey & Sharon Dean  
Warren Dellinger  
Robert & Janice Diamond  
Jim & Shirley Dicus  
Benjamin & Rita Edwards  
Ronald & Estelle Evans  
Brad Fenton  
Glenn & Judith Floyd

Michael "Todd" & Penni  
Graham  
Rodney & Janice Gray  
James "Jim" & Shelley Hamby  
John & Kay Hargrave  
Mark "Randy" & Margarette  
Harp  
Bill & Margaret Harris  
Chalmers & Charlotte Herman  
Roland & Claudia Hisle  
Anita Holloway  
Sarah Holmes  
Jay & Kenda Horne  
Ayline Johnson  
Carlos & Pam Johnson  
Don & Jane Kellogg  
Melba King  
Wink & Rachel Kopczynski  
Lois & Cephus Lawson  
Trease Layton  
Leonard Limes  
Louzelle Malcom  
Doris McCoy  
Rick & Debbie McMurtrey  
Mark & Susan Millsap  
Gil & Jeanine Morgan  
Mary "Jane" Muntz  
Duane & Linda Murray  
Trudy Nance Carter  
Victor & Mary Neal

Bill & Betty Parham  
Oscar Parker  
Jack & Linda Paschall  
Willard & Martha Rhynes  
Julian & Irene Rothbaum  
James Saied  
Earl & Ellen Sherman  
Betty Stevens  
Cleo Sumter  
Sharyn Taylor  
Bertha Thomas  
James & Ethel Thomas  
Brad & Sandra Thompson  
Steven & Penny Turner  
Glenn Unterkircher  
Justin & Marguerite Vogt  
Stanley & Diana Wagner  
Wes & Lou Watkins  
Glenn Watson  
Carla Weber  
Terry West  
Kelvin & Amy Williams  
Gerald & Winola Williamson  
Jack & Elizabeth Witherow  
James Young

## CORPORATIONS

Ada Nissan Inc.  
Ada Orthopedics & Sports  
Medicine  
Amy James Trust  
Arkla Gas  
Arvest Bank Operations  
AT&T  
C.L. Richards Family  
Foundation  
Carlock Family  
Central & Southwest  
Foundation  
Chesapeake Energy  
Communication Federal  
Credit Union  
Compass Group  
ConocoPhillips Company  
Contemporary Services  
Corporation  
Crawford & Associates  
Diamond "K" Kiwanis of Ada  
Dicus Corporate Office  
Dicus Supermarkets  
Dole Enterprises, L.L.C.  
East Central Credit Union  
Estate of Lola Lance  
ECU Alumni Association  
Ernst & Young Foundation

Estate of Francis E. Mayhue  
First United Bank - Ada  
First United Bank - Durant  
First USA  
Holcim, Inc.  
Home Federal Bank  
John McGee Trust  
KPMG Foundation  
Lamar Companies  
Landmark Bank  
Masonic Charity Foundation  
of Okla.  
Morgan Family Foundation  
New York Life Foundation  
Oklahoma State Bank  
Patriot Ford  
People's Electric Cooperative  
Pitsco  
Professional Food-Service  
Mgmt  
Raytheon Company  
Samuel Roberts Noble  
Foundation  
SBC Telephone  
Seminole Nation  
Sunoco, Inc.  
Texas Book Company  
Texas Instruments Foundation  
Wells Fargo Matching Gift  
Program

# Silver Level

**\$10,000 - \$25,000**

Angela Ables  
Arnold & Nancy Allen  
Bill & Janice Anoatubby  
Paul Barby  
Margaret Barton  
Glen & Tracy Bawcum  
Richard & Sharon Bays  
John & Yvonne Bedford  
Brad & Aleta Biddy  
Daniel & Kathryn Boone  
David & Molly Boren  
Emma Box  
Carol Bridges  
James & Martha Burke  
Richard Campbell  
Jerry & Judith Carroll  
William & Sheril Chapman  
Nick & Nancy Cheper  
James Clark  
Charles Collings  
Jim & Andrea Conway  
Richard & Pamela Craig  
Jay Cuccia  
James & Kathy Custar  
Forrest Danley  
Phyllis Danley  
Tommy & Cathy Darter  
Austin Deaton  
Bruce Dennis  
W.J. & Barbara Dillon  
Dee & Linda Drumm  
James Duckett  
Robert & Deborah Dudley  
Norman & Jackie Duncan  
Brent Dyer  
Jack & Gladys Eldridge  
Ruben & Karla Elizarde

Jimmy & Angela Eppler  
Jerry & Mamie Farnham  
Koy & Glenna Floyd  
Brian & Amy Ford  
Steve & Mary Forster  
Roger & Leigh Gaddis  
Kent & Leslie Hamilton  
Yvette Harjo  
Burl & Janis Harris  
Jerry & Susan Havens  
Edd & Kay Henson  
Arthur Herman  
Robert Holland  
Alan Holloway  
Cameron Horne  
John & Karen Hudson  
Jeremy & Becky Humphers  
Kurt & Pamela Jackson  
Raymond & Jane Johnson  
Ivan & Mary Keatley  
Mark & Paula Kedy  
Harrel & Rebecca Kennedy  
Frank & Leslie "Ruth" Kennon  
Victor & Linda Kulp  
Adrianna Lancaster  
Bill & Sherri Lance  
Marquis Landrum  
Robert & Ellen Langland  
Stanley & Phyllis Lasarsky  
Tom & Lynette Luttrell  
Alan Marcum  
Christopher & Shelly McGill  
Mark & Lori McKane  
Thomas & Ruth McKnight  
Gordon & Patricia Melson  
Stephen "Chris" & Aarica  
Mims

Robert Muntz  
Donnie & Shirley Nero  
Pamela Newcombe  
Fred & Margaret Nims  
Clarence & Vinita Oliver  
Pat O'Neal  
Donald & Loma Orr  
Gary & Susan Paddack  
Christine Pappas  
Leon & Vicky Petete  
Paul Pfeffer  
Stephen & Judy Pierce  
Gregory & Robin Plumb  
David Porter  
Michael & Amanda Prince  
Dexter & Yvonne Pruitt  
Victor Pryor  
Ray & Connie Quiett  
Sandra Reece  
George & Karen Rhodes  
Elizabeth Ross  
Carl Rutledge  
Richard & Johnce Ryerson  
Elizabeth Schmelling  
Guy & Holly Sewell  
Clayton & Diana Shannon  
Terry Shannon  
Larry & Lani Shropshire  
Forest & Lynda Simpson  
Rick & Ann Simpson  
Patrick & Jennie Stone  
David & Sally Story  
Mary Ann Thomas  
Ronald & Rahmona Thompson  
Hugh "Bronson" & Allene  
Warren  
Mattie Warren

Craig & Diana Watson-Maile  
Steve Whitworth  
Essie Wilburn  
Dennis & Elsie Williams  
Charlie & Pamela Williamson  
Loretta Yin  
Ronald & Barbara Young

## CORPORATIONS

Ada Artists Association  
Ada Fraternal Order of Police  
Ada High Class of 1950  
Ada Jobs Foundation  
Ada Lion's Club  
Ada Regional United Way  
Ada Rotary Club  
Alpha Kappa Alpha  
Educational Advancement  
Foundation, Inc.  
BancFirst  
Camp Marketing Services, LLC  
Chi Omega Phi Theta Chapter  
Communities Foundation of  
Oklahoma  
Crowe & Dunlevy  
Deloitte Foundation  
Delta Dental of Oklahoma  
Oral Health Foundation  
Diamond Onions  
ECU Women's Club  
ENACTUS  
Eventbrite, Inc.  
First Merit Bank, N.A.  
Glenn Watson Administrative  
Trust  
Info Trax Systems, Inc.  
Investrust

J. Chalmers Herman 1996  
Revocable Living Trust  
Jearl Smart Foundation  
Jet Specialty, Inc.  
Laurco Energies, Inc.  
Leachco, Inc.  
Leadership Murray County  
Foundation  
LegalShield  
Microsoft Matching Gifts  
Program  
NCS Pearson  
Oklahoma Rehab. Association  
Okla. Temporary Services Inc  
Pearson  
Puterbaugh Foundation  
Riggs, Abney, Neal, Turpen,  
Orbison & Lewis  
Rowlett Investors, LP  
Semira Charboneau Internal  
Medicine, P.C.  
Shell Oil Company  
The Capitol Group Co.  
Thompson College Stores, Inc.  
Tinker Federal Credit Union  
Vanguard Charitable  
Endowment Program  
Video Plus, LP  
Wagner, Falconer & Judd LTD.  
Wal-Mart Foundation  
Whitten Newman Foundation  
Natashia Wright Memorial  
Fund



# CIRCLE OF ANNUAL GIVING

## \$1,000+ Annual Gifts

The Circle of Annual Giving recognizes gifts of \$1,000 or more at six giving levels. These gifts enhance scholarships and other university initiatives. Thereby enabling the university to pursue a level of excellence not otherwise possible.



### Briles Circle

Is named for the founding president of East Central Normal School, who served from 1909 to 1916. This Circle honors those donors who contribute to the University or Foundation through an annual contribution of \$1,001 to \$5,000.



### Gordon Circle

Honors East Central Normal School's second president who led the college from 1916 to 1920, recognizes the generosity of those who make annual contributions to the University or Foundation of \$5,001 to \$10,000.



### Linscheid Circle

Is named for East Central State Teachers College's third president who led the college from 1920 to 1949. It recognizes the special commitment of those donors who annually contribute between \$10,001 and \$25,000.



### Spencer Circle

Honors East Central State College's fourth president who led the college from 1949 to 1969, recognizes those making annual contributions to the University or Foundation of \$25,001 to \$50,000.



### Wagner Circle

Honors East Central University's fifth president who led the University from 1969 to 1988, recognizes those donors who make annual contributions to the University or Foundation of \$50,001 to \$100,000.



### Cole Circle

Honors East Central University's sixth president who led the University from 1989 to 2006, recognizes the special commitment of donors who make annual contributions to the University or Foundation of \$100,001 or more.

## COLE CIRCLE

\$100,000+

Mary "Pauline" Lanoy  
Chickasaw Nation Division  
of Commerce  
City of Ada

## WAGNER CIRCLE

\$50,001-\$100,000

Valley View Health &  
Wellness Foundation

## SPENCER CIRCLE

\$25,001-\$50,000

Harvey & Sharon Dean  
Shirley Stonecipher  
Reggie & Rachelle Whitten  
James Young  
Devon Energy Corporation  
Dicus Supermarkets  
Pitsco

## LINSCHIED CIRCLE

\$10,001-\$25,000

Charles & Lila Acker  
John & Kay Hargrave  
Anita Holloway  
Judy Horne  
Jeremy & Becky Humphers  
Stephen "Chris" & Aarica Mims  
Gil & Jeanine Morgan  
Mary "Jane" Muntz  
Gary & Susan Paddack  
Craig & Christy Scheef  
Wes & Lou Watkins

### CORPORATIONS

Ada Nissan Inc.  
Childrens Reading Charitable Trust  
Communication Federal Credit Union  
Ernst & Young Foundation  
Jet Specialty, Inc.  
Kellogg & Sovereign Consulting, LLC  
Mercy of Ada  
Oklahoma Gas and Electric  
Vision Bank of Ada

## GORDON CIRCLE

\$5,001-\$10,000

Jay Allbaugh  
Nathan & Linda Atchison  
Jim & Andrea Conway  
Denver & Victoria Davison  
Warren Dellinger  
Wink & Rachel Kopczyński  
Tawfik & Siham Ramadan  
James "Mark" & Melinda "Susie"  
Stringfield  
Sharyn Taylor  
Rahmona Thompson  
Charlie & Pamela Williamson

### CORPORATIONS

Citizens Bank of Ada  
Delta Dental of Oklahoma Oral Health  
Foundation  
First United Bank  
Little Glasses Resort & Marina  
NCS Pearson  
Patriot Ford  
Texas Book Company

Angela Ables  
 Russ & Amy Allen  
 Duane & Marian Anderson  
 Bill & Janice Anoatubby  
 Chris Anoatubby  
 Steven & Jeanetta Bagwell  
 Sharon Bardin  
 Lona Barrick  
 Margaret Barton  
 Glen & Tracy Bawcum  
 Kevin & Heather Beam  
 Jeremy & Retha Bennett  
 Patrick & Delilah Bohan  
 Mark & Denise Brown  
 Jerry Carroll  
 Christian Carvajal  
 Richard & Cheryl Carvajal  
 Randall & Deanna Chambers  
 Tim & Deborah Claxton  
 Wayne & Patsy Cobb  
 Jeffery Coleman  
 Richard & Pamela Craig  
 James Cranford  
 Thomas & Diane Criswell  
 Bruce Dennis  
 James & Mildred Dennis  
 Robert & Deborah Dudley  
 Gunter Enz  
 Jimmy & Angela Eppler  
 Ronald & Estelle Evans  
 Hal Faresh  
 Leslie Fisher-Switzer  
 Glenn & Judith Floyd  
 Mark & Devin Floyd  
 Matthew & Courtney Folsom  
 Brian & Amy Ford  
 Mary Frame  
 William Frame  
 Leo & Janet Fundaro  
 Roger & Leigh Gaddis  
 John & Mary Garber  
 Wendell & Susie Godwin  
 James Gordon  
 Dale Granacki  
 James Gray  
 Rodney & Janice Gray  
 James "Jim" & Shelley Hamby  
 Kent & Leslie Hamilton  
 Zela Hanson  
 Mark "Randy" & Margaret Harp  
 David Hatton  
 Jerry & Susan Havens  
 James & Holly Hawk  
 Gregory & Stephanie Henson  
 Roland & Claudia Hisle  
 Chance Hogstad  
 Pete & Lesley Hogstad  
 John & Karen Hudson  
 Bradley Jessop  
 Thomas & Lisa John  
 Carlos & Pam Johnson  
 Phillip Johnson

Don & Jane Kellogg  
 Kenneth "Doug" Kennon  
 Leslie "Ruth" Kennon  
 Ryan & Jessica Kilby  
 Adrianna Lancaster  
 Agnes Lane  
 Robert Langland  
 John & Angela Long  
 Tom & Lynette Luttrell  
 Tracy Marino  
 John & Pam Martin  
 Margaret McAdams  
 Tony & Angela Mendoza  
 Michael & Tara Millsap  
 Kenny Morrison  
 Robert Muntz  
 Randell Nail  
 James "Rob" & Monica Neal  
 Victor Neal  
 Donnie & Shirley Nero  
 Pamela Newcombe  
 Christine Pappas  
 Betty Parham  
 Keith & Melissa Patterson  
 Franklin & Tammy Patton  
 Leon & Vicky Petete  
 Deanna Piercy  
 Michael & Katricia Pierson  
 Derek & Gina Porter  
 Randall & Julie Porter  
 Tommy & Amy Quaid  
 Sandra Reece  
 John Walker & Vickie Reifsnider  
 George & Karen Rhodes  
 Willard & Martha Rhynes  
 Jeremy Richardson  
 Mel & Regina Robertson  
 Richard & Johnne Ryerson  
 Stephen Schmelling & Carlotta  
 Lockmiller  
 Wayne & Robyn Scribner  
 Bobby & Tausha Shelton  
 Rick & Ann Simpson  
 Carol Smith  
 Elizabeth Smith  
 Michael & Karen Smith  
 Michael & Deborah Sovereign  
 Yancy & Laura Spivey  
 Joel Stafford  
 Michael Stanczyk  
 Jody Tacker  
 Duard Thomas  
 Mary Ann Thomas  
 Brad & Sandra Thompson  
 Joe Tunnell  
 Chris & Debbie VanDenhende  
 Thomas & Andrea Volturo  
 John & Vickie Walker  
 Hugh "Bronson" & Allene Warren  
 Mark Weems  
 Kelvin & Amy Williams

## CORPORATIONS

Act II, Inc.  
 Ada Area Chamber of Commerce  
 Ada Ford Lincoln Mercury  
 Ada Jobs Foundation  
 Ada Lion's Club  
 Ada Regional United Way  
 Ada Rotary Club  
 Alpha Kappa Alpha Educational Advancement Foundation, Inc.  
 Brooksie A. Peyton Foundation  
 Byng Public School  
 Cheyenne Christian Insurance Agency  
 Communities Foundation of Oklahoma  
 Community Foundation of Southeast Kansas  
 Compass Capital Management  
 Crawford & Associates  
 Crowe & Dunlevy Foundation Inc.  
 Cushing Flight Service  
 De Beubien, Knight, Simmons, Mantzaris & Neal LLP  
 Fairway Outdoor Funding, LLC  
 Fighting Addiction Through Education - F.A.T.E.  
 Flow Valve LLC  
 Horne Services, Inc.  
 Jearl Smart Foundation  
 Keeling Hawkins, Inc.  
 Kerr Machine Co.  
 KPMG Foundation  
 Landmark Bank  
 Leachco, Inc.  
 LegalShield  
 Oklahoma City Community Foundation  
 Oklahoma Heritage Bank  
 Oklahoma High School Basketball Coaches Association  
 Oklahoma Humanities  
 Pearson Education  
 People's Electric Cooperative  
 Ponds RX OK INC.  
 Pontotoc County Drug Court  
 Ram Jack Systems Distribution, LLC  
 Rhynes & Rhodes Furniture, Inc.  
 Riggs, Abney, Neal, Turpen, Orbison & Lewis  
 Ryan Benefits Inc.  
 Security State Bank  
 Seminole Nation  
 Seminole State College Educational Foundation, Inc  
 Shimanovsky & Moscardini, LLP  
 Southeastern Drive-Ins Inc  
 Southwestern Stationery & Bank Supply  
 State Farm Companies Foundation  
 State of Oklahoma  
 Success Partners  
 Tinker Federal Credit Union  
 United States Environmental Protection Agency  
 Wagner, Falconer & Judd LTD.  
 Wells Fargo Matching Gift Program  
 Wells Vision and Laser Eye Center

Thank You for Your Support!



Our Past, Our Present  
ECU's Future

**ECU FOUNDATION**  
**1100 E. 14TH STREET, PMB Y-8**  
**ADA, OK 74820**

**[WWW.ECOK.EDU/FOUNDATION](http://WWW.ECOK.EDU/FOUNDATION) • 580-559-5655**