

ECU CCRR

The Official Newsletter of the South-Central Child Care Resource and Referral Program at East Central University



**OKLAHOMA CHILD CARE
RESOURCE & REFERRAL**

*Meet the core ECU CCRR staff! From left to right:
Georgianna, Lindsay, Angel, and Pamela.*

**LEAH LYON,
EXECUTIVE DIRECTOR**

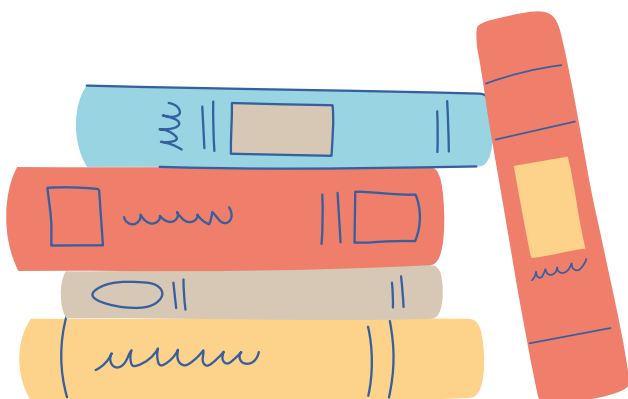
**GEORGIANNA SULLIVAN,
CHILD CARE COACH**

**ANGEL PATTERSON,
BUSINESS CONSULTANT**

**PAMLA ARMSTRONG,
ASSISTANT DIRECTOR**

**LINDSAY CHRISTIAN,
CC COACH, INFANT TODDLER**

**BETHANY WALLING,
PROJECT SPECIALIST**



WORDS TO LIVE BY

by Albert Einstein

“If you want your children to be intelligent, read them fairy tales. If you want them to be more intelligent, read them more fairy tales.”



EMPLOYEE SPOTLIGHT



Bethany Walling has assisted the ECU CCRR program now for four years. Her main contributions to the office include creating content, such as flyers, brochures, this newsletter, and the annual report. She also manages the Facebook page.

Bethany has lived in Ada since the 5th grade and graduated from Ada High and ECU. She has been married for 15 years and has a 12-year-old daughter.

HOW CAN WE HELP?

Georgiana and Lindsay are here to help you apply for a new QRIS rating and to implement the Pyramid Model in your center or home.

They are available to help with a number of other topics including:

- classroom engagement
- parent engagement
- active supervision
- room arrangement and setting up centers
- on-site observations
- lesson/activity planning
- outdoor learning and physical activities
- new teacher training
- routines and scheduling
- nutrition
- transitions

They can also address issues such as:

- behavioral and guidance issues
- trauma
- social-emotional development
- language development
- brain development

Angel is here to assist the with the business side of your center or home daycare. She can assist by:

- Offering support aimed at improving quality to providers through coaching and professional development.
- Supporting providers in the creation of budgets and strategic cost modeling.
- TA with Brightwheel software to help support and strengthen child care programs. Any Provider can apply for Brightwheel by requesting a Business Consultant on the new QRIS application.

“

*The classroom
is like a second
home. Take
care of it.*

RESOURCE ROOM

For a full list of FREE bulletin board kits available and photos of each go to our Facebook page or our website at ecok.edu/current-students/student-services/centers-programs/child-care-resource-and-referral-agency. If we don't have a kit you want, send us a photo or topic and we will put a kit together for you.

We also have over 200 die cuts available and will be glad to cut and send to you or you are welcome to come cut them yourself. Let us know colors and number needed.

LENDING LIBRARY

We have several new items in our lending library inventory, including two light boards and resource materials for all ages to use with them. Along with the new items, we have 51 theme boxes and many activity boxes and general inventory items for indoor and outdoor play, STEM activities, social-emotional activities, sensory items, books, learning kits, music and rhythm activities, infant/toddler items, games, manipulatives, DVDs and CDs, training items and much more. Remember, we pick up and deliver!



Congrats to the contest winners this quarter! Remember to check the ECU CCRR Facebook page and your email for more opportunities to win!

LAMINATING

Laminating is FREE! You are welcome to come do it yourself or let us do it for you. You can email what you want laminated or drop it by to us.

CALL US TODAY!

Call us at 580-559-5303 or email parmstro@ecok.edu to place an order for any services from the Resource Room or the Lending Library. Our office hours are 8-5, M-F; however, call before stopping by as we are sometimes on the road. If you need a weekend appointment that can be arranged.

Healthy Patriotic Snacks for kids



Click on the pic above to find all recipes for these delicious patriotic snacks the kiddos are sure to LOVE!!



ECU CCRR's Facebook page is full of fun crafts like this. Make this popsicle Uncle Sam for Independence Day!

Click on the pic to be taken to the blog post for this craft.

Don't forget to follow ECU CCRR on Facebook! Click above to be taken to our page.



TRAINING OPPORTUNITIES

Most are FREE or have only a small registration fee.

You must pre-register for all training at www.okregistry.org. Please register early to prevent the class from being cancelled for low registration numbers. We have had to cancel several trainings because of lack of participation. Participants will be notified if the class is cancelled for any reason.

Safe Sleep Training

Our Infant Toddler Specialist, Lindsay Christian, and Child Care Consultant, Georgiana Sullivan, are certified Safe Sleep trainers and would be happy to come to your facility or a facility near you to provide this formal training. Contact either of them if you are interested. Also, several Self-Paced Web Based courses are available to meet the Oklahoma Child Care Services-Licensing requirement for safe sleep training. See the CECPD website for a full list of options and descriptions. The link to register may be found at www.okregistry.org.

ELG Training

Two Self-Paced Web Based ELG trainings are being offered by CECPD. Both are fourteen hour courses and the cost is \$20 for each. One is for Infants, Toddlers and Twos and the other is for Children Ages 3-5. These will meet the Oklahoma Child Care Services licensing requirement. See the CECPD website for a full list of options and descriptions. The link to register may be found at www.okregistry.org.

Other Formal Training

We have no scheduled trainings at this time.

Watch your email, our Facebook page or the CECPD Registry for new additions. Self-Paced Web-Based Training may be found at www.okregistry.org.

QUALITY RATING & IMPROVEMENT SYSTEM



Quality Care for Every Child!

Learning and Development

The learning environment is key to children's learning and gives them the space, materials, and opportunity to learn and practice new skills.

Interest areas are thoughtfully designed areas. Learning is an interactive process and children learn through doing. The environment in which children play and learn provides them with opportunities to explore and interact with a variety of inviting activities and materials and is based on each child's individual interests and needs.

Researchers agree that young children under two years old should not watch television or other screens. During this time of rapid brain development, children need activities that promote language development and brain growth such as interaction with others and hands-on activities.

Children learn from outdoor play as well. Fun and interesting outdoor interest areas can include experiences that are sometimes too messy for indoors, such as sand and water tables and some art activities. In the heat of summer, a rug and basket of books placed under a shade tree is a cozy spot for reading to children.

High-quality early learning and out-of-school time environments include the use of developmentally appropriate curriculum and learning spaces based on individual children's needs and interests. Daily schedules are written timetables of events that show what is supposed to happen throughout the day. Lesson plans are the basic plan for the day and help teachers select, plan, and organize activities, projects, and equipment appropriate for the ages, development, and interests of children in their care.

<https://gracevillage.com.au/invitations-to-play/>

<https://challengingbehavior.cbcs.usf.edu/docs/Helping-Children-Transition.pdf>

https://challengingbehavior.cbcs.usf.edu/docs/Routine_cards_home.pdf

https://challengingbehavior.cbcs.usf.edu/docs/backpack/BackpackConnection_routines_transitions.pdf

<https://www.cecpcd.org/en/resources/qris-resources-family-child-care-home/88-learning-environment/>

<https://www.cecpcd.org/en/resources/qris-resources-child-care-center/88-learning-environment/>

<https://www.cecpcd.org/en/resources/qris-resources-child-care-center/88-learning-environment/screen-time/>



QRIS STAFF

Quality Care for Every Child!

QRIS Stars Outreach Specialists are available to answer any questions you may have regarding Stars Criteria or to assist you in applying for Stars or increasing your Star level. As requirements change, providers will be notified via email by the Oklahoma Department of Human Services.

Misti Denton, Stars Outreach Specialist – East

E-mail: Misti.Denton@okdhs.org

Phone: (918) 344-4368

Fax: (918) 207-4632

Adair, Atoka, Bryan, Cherokee, Choctaw, Coal, Craig, Creek, Delaware, Haskell, Hughes, Johnston, Kay, Latimer, Leflore, Lincoln, Logan, Marshall, Mayes, McCurtain, McIntosh, Muskogee, Noble, Nowata, Okfuskee, Okmulgee, Osage, Ottawa, Pawnee, Payne, Pittsburg, Pontotoc, Pottawatomie, Pushmataha, Rogers, Seminole, Sequoyah, Tulsa, Wagoner, and Washington counties

Tiffany McPherson, Stars Outreach Specialist – West

E-mail: Tiffany.McPherson@okdhs.org

Phone: (918) 348-8515

Fax: (918) 752-2090

Alfalfa, Beaver, Beckham, Blaine, Caddo, Canadian, Carter, Cimarron, Cleveland, Comanche, Cotton, Custer, Dewey, Ellis, Garfield, Garvin, Grady, Grant, Greer, Harmon, Harper, Jackson, Jefferson, Kingfisher, Kiowa, Love, Major, McClain, Murray, Oklahoma, Roger Mills, Stephens, Texas, Tillman, Washita, Woods, and Woodward counties.

QRIS CHANGES

Major Changes will include and address:

- Five level system
- Alternate pathway to national accreditation
- Continuity of care
- Master teacher graduated ratio
- Staff retention • QRIS Orientation training
- Curriculum and lesson planning
- Transitions
- Family partnership
- Professional development

Provider supports:

- Online application
- Financial incentives
- Coaching services
- Training videos
- ECE business training and assistance

JUNETEENTH FLAG CRAFT



www.craftingafunlife.com

Make this flag in honor of Juneteenth! Click the pic to be taken to the blog post for this craft!

CONTACTS & RESOURCES

Center for Early Childhood Professional Development (CECPD)
1 (888) 446-7608 www.cecpd.org

Locating Quality Child Care -
1 (800) 438-0008

Oklahoma DHS Child Care Services -
1 (800) 347-2276
www.okdhs.org/childcare

Oklahoma Professional Development Registry
www.okregistry.org

Child Care Services County Offices
Carter County - (580) 490-3600
Garvin County - (405) 238-6461
Johnston County - (580) 618-6256
Love County - (580) 490-3600
Marshall County - (580) 618-6256
McClain County - (405) 238-6461 or
(405) 248-8069
Murray County - (580) 618-6256
Pontotoc County - (580) 310-7050
Pottawatomie County - (405) 301-5874 or
(405) 962-8394
Okfuskee County - (918) 777-8029
Seminole County - (405) 214-4147

Office of Background Investigations
1 (800) 347-2276

Reaching for the Stars
Misti Denton (serving counties east of I-35)
1 (800) 884-1582
Misti.Denton@okdhs.org
Tiffany McPherson (serving counties west of I-35)
1 (800) 884-1582
Tiffany.Mcpherson@okdhs.org

Scholars for Excellence in Child Care
www.okhighered.org/scholars
Statewide contact - Bailey Maxey
1 (866) 343-3881 or (405) 225-9395
Murray St College—Heather McLean
(580) 387-7412
Seminole St College—Lynetta Robins
(405) 382-9751

Pathway to CDA -
Bailey Maxey - 1 (866) 343-3881

Warmline- 1 (888) 574-5437
Free telephone consultation for child care providers covers behavioral health related topics.
<http://warmline.health.ok.gov/>



CALL CENTER

The Child Care Services call center for grant support is open Monday-Friday, 9 am to 4 p.m. The phone number is (405) 521-6177.

SCHOLARS PROGRAM



The Scholars program promotes scholar success by empowering scholars to take responsibility for achieving their academic and professional goals.

Scholar coordinators:

- Provide support services and technical assistance.
- Help scholars navigate through the entire process, from the application for the scholarship, admissions and financial aid to credential completion.
- Provide academic and career advisement to ensure scholars' success.
- Provide guidance in exploring scholars' credential options to ensure compatibility with educational and professional goals.

For more information or assistance, contact the scholar coordinator in your area:

- Carl Albert State College, Poteau, Idabel and Sallisaw, Verna Corley, 918.647.1252
- Connors State College, Muskogee, Bailey Maxey, 405.650.0090
- Eastern Oklahoma State College, Wilburton, Bailey Maxey, 405.650.0090
- Murray State College, Tishomingo, Bailey Maxey, 405.650.0090
- Northeastern Oklahoma A&M College, Miami, Bailey Maxey, 405.650.0090
- Northern Oklahoma College, Tonkawa, Enid and Stillwater, Jayme Orgain, Scholar Coordinator, 405.762.9141, or Courtney Mikolajczyk, Scholarship Support Specialist, 405.372.2404
- Oklahoma City Community College, Quen Wilczek, qwilczek@osrhe.edu
- Oklahoma State University – Oklahoma City, Jeff Rosson, 405.945.9168 or 800.560.4099
- Redlands Community College, El Reno, Karen Huett, 405.422.1286
- Rose State College, Midwest City, Jennifer Bachhofer, 405.733.7449
- Seminole State College, Seminole, Bailey Maxey, 405.650.0090
- Tulsa Community College, Tulsa, Melissa Caviness, Scholar Coordinator, 918.595.8024, or Cacey Cottom, Scholarship Support Specialist, 918.595.8280
- Western Oklahoma State College, Altus, Alejandra Tillman, 580.477.7892
- Career Technology Centers (Pathway), Bailey Maxey, 405.650.0090

WARMLINE

The Warmline for Oklahoma Child Care Providers offers free telephone consultation to child care providers on numerous topics of concern. Consultants refer providers to appropriate services and resources within their communities.

A consultant can help clarify a problem, provide information, help generate ideas and solutions, offer guidance on developmentally appropriate practices, provide referrals to meet individual needs and requests, direct providers to relevant resources to assist with a concern, and provide follow-up when needed.

Call: 1 (888) 574-5437

Email your questions to: warmline@health.ok.gov

Go online: <http://warmline.health.ok.gov/>



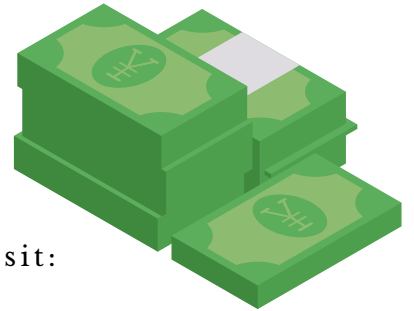
CECPD STIPEND PROGRAM

The Center for Early Childhood Professional Development (CECPD) Oklahoma Registry Certificate of Achievement and Stipend Program awards \$600 to individuals who qualify when they meet professional development in specific areas of concentration.

Be on the lookout after the first of the year for two additional stipend opportunities to be included. These will include Business Practices for Family Child Care Homes and Physical Activity and Nutrition.

Currently there are five targeted areas of PD for achieving this award:

- Childhood Resiliency
- Infant/Toddler
- Pre-School
- School-Age
- Quality Child Care



To learn more about this program and to see if you qualify visit:
<https://bit.ly/CECPDStipendOpportunity>



FILL YOUR OPEN POSITIONS THRU SHARED SERVICES

If you have not done so already, please register for [OK Shared Services](#) so you can start posting your open positions!

- The May and June CCS Newsletters will have additional information.
- Child care services will promote and advertise the child care profession through public service announcements and social media campaigns.

If you have already registered for Shared Services, you can register for the OK Early Care & Learning Jobs platform and start posting your open positions today! All job openings will automatically be posted to eight major job boards.



A Message from the Office of Background Investigations (OBI)

Individual Notices:

- OBI is updating our systems.
- Due to these updates, QE's with CHRRP Portal access may now find Individual Notifications in your Portal results.
- No action is required for the program on these notifications.
- OBI sends the Individual notice to the individual's home address by USPS.
- However, if an individual states they have not received the Individual notice from OBI and/or moved shortly after submission of the background check request, the QE may share the Individual notice with the individual.

5 year rechecks:

- Don't panic, we have plenty of time! J
- The first 5 year re-assessments are not due until November 1, 2022!
- The first 5 year re-assessments will only be required for individuals who have been working in the same program for 5 years, since November 1, 2017.
- OBI is not accepting any 5 year rechecks/reassessments at this time.
- 5 year rechecks will be required to be submitted to OBI as a "5 Year Recheck", request type.
- A child care employment background check request will not be counted as a 5 year recheck.
- If you have changed programs, within a 5 year window-you have already had your criminal history re-assessed; and your 5 year recheck clock starts over.
- OBI will contact the industry in the summer of 2022, with instructions to begin submitting 5 year re-assessments—several months before the deadline.
- Programs that are anxious to be prepared for these rechecks, may prepare a list of staff that will require a 5 year recheck in November 2022 or thereafter.
- Remember, the very first 5 year rechecks will only be required for individuals that have been at the same program-without a break in employment-from November 1, 2017 through November 1, 2022.

Incomplete submissions:

To assist OBI in returning background checks timely, please:

- Please double check all Background Check Requests for accuracy, before submitting the request.
- Verify that the individual's current legal name is listed and spelled correctly.
- Verify that all names/aliases the individual has used during their lifetime, are listed and spelled correctly.