



Quarterly  
Newsletter  
FALL 2024

# ECU CCRR

The Official Newsletter of the  
South Central Child Care Resource & Referral Program  
at East Central University

**ECU**  
CCRR STAFF  
SOUTH CENTRAL REGION

NOT PICTURED:  
**LEAH LYON**  
EXECUTIVE DIRECTOR  
**BETHANY WALLING**  
PROJECT SPECIALIST

FROM LEFT TO RIGHT:

**MCKENNA MORGENTHALER**  
CHILD CARE CONSULTANT

**ANGEL PATTERSON**  
REGIONAL DIRECTOR

**BREANNA FOSTER**  
INFANT TODDLER CONSULTANT

**JESSICA COLUNGO**  
BUSINESS CONSULTANT



## WORDS TO LIVE BY *by Josh Shipp*

"Every kid is ONE caring adult away  
from being a success story."



# Hip Hip Hooray!!

**ECU CCRR is having a GOOD DAY!**



FROM THE DESK OF ANGEL PATTERSON:

*I am so EXCITED to let you know South Central CCRR is fully staffed again!*

*And what a GREAT team we have formed!*

*McKenna, Jessica and Breanna all bring experience and expertise to the table. From social/emotional behaviors, to classroom management, to business related questions, we have you covered!*

*Call today if you need to schedule an appointment with one of these amazing girls.*

#### ECU SOUTH CENTRAL CCRR CONTACT INFORMATION:

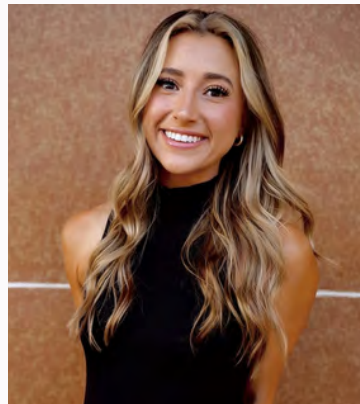
McKenna Morgenthaler- Child Care Consultant- [mckemor@ecok.edu](mailto:mckemor@ecok.edu)- 580-559-5303

Jessica Colungo- Business Consultant- [jcolungo@ecok.edu](mailto:jcolungo@ecok.edu)- 580-559-5327

Breanna Foster- Infant/Toddler Consultant- [bfoster@ecok.edu](mailto:bfoster@ecok.edu)- 580-559-5304

Angel Patterson- Regional Director- [apatterson@ecok.edu](mailto:apatterson@ecok.edu)- 580-559-5629

meet  
**BRE**



Hello! I am Breanna Foster, the new Infant & Toddler consultant! Before this role, I have been an infant teacher, teachers assistant, and preschool teacher. I am also a mother of two beautiful girls, Charlie who is 4 and Annie who is 2.5. Learning about early childhood development and teaching it to children and others is my passion. As a teacher, I needed resources and support, so I love that I can do that for others now. I love spending quality time with my daughters and creating memories with my family.



Save  
THE  
Date

# REGIONAL RECONNECT

2-22-25



## UPCOMING THRIVE NETWORK MEETING

FOR HOME PROVIDERS:

October 12th - Kim Quinn, Warmline

November 16th - Jason Wilson, Loose Parts

December 7th - Creative Outlet

9 a.m. - 1 p.m.

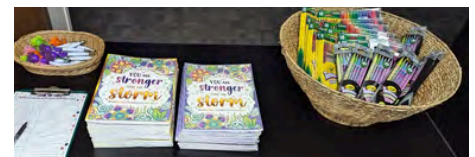
at ECU CCRR office.

Contact Jessica Colungo on how to get signed up for Thrive Network!

**IT'S FREE!!! And SO MUCH FUN!**



# HOME PROVIDERS



### WHY JOIN THE THRIVE NETWORK?

The Thrive Network provides free resources, professional development and peer connection for Oklahoma home child care providers and prospective providers.

While you take care of working Oklahomans' families, we take care of you by supplying the support and guidance you need to be successful.

# New Project

OFFERED BY ECU CCRR!!



Creating a feelings chart can be a great way to help children express their emotions when they first arrive to start their day.

As child care providers, understanding and recognizing children's emotions is crucial for their development. A feelings chart is a valuable tool that encourages children to identify and express how they feel in a safe and supportive environment. By using this chart, we can help children communicate their emotions, promote emotional intelligence, and foster a positive atmosphere in our care settings.

## How to Use the Chart

1. Daily Check-Ins: At the start or end of the day, encourage children to choose an emoji that reflects how they feel.
2. Discussion: Allow children to share why they feel that way, fostering communication and understanding.
3. Emotion Regulation: Teach children strategies for coping with different emotions based on their selections.

**POSTERS ARE READY TO BE DELIVERED TO YOU!  
CONTACT US TODAY TO REQUEST YOURS.**



## FREE Bulletin Board Kits

Do you need a Bulletin Boards for the Holidays??

**WE HAVE YOU COVERED!**

These three bulletin boards above are the current kits available for order.

To order, email Breanna Foster at [bfoster@ecok.edu](mailto:bfoster@ecok.edu).



Make sure you are following our Facebook page

@ [facebook.com/ECUCCRR](https://www.facebook.com/ECUCCRR)

# WELCOME



## ECU CCRR

welcomes these new providers in the SC Region who have opened this quarter!!

MRS. E'S DAYCARE  
NAE NAE'S NURSERY  
CRYSTAL COLE HOME PROVIDER



# RESOURCE ROOM/ LENDING LIBRARY

**DIE CUTS-** With over 200 die cuts available, we will be glad to cut any color paper to go along with your weekly theme. Send us your color request and the number of die cuts needed.

**PLACEMATS-** Looking for a way to help your students recognize their name??? We have personalized placemats available by request! (see picture(s) below for example of previous placemats created)

**THEME BOXES-** We have theme boxes available for checkout! From activity boxes and general inventory items for indoor and outdoor play, STEM activities, social-emotional activities, sensory items, books, learning kits, music and rhythm activities, infant/toddler items, games, to manipulatives we have you covered.

Remember, we pick up and deliver!  
Contact McKenna for more information!

**LAMINATING-** Need something laminated?? We have a large and small laminator available to SC Providers.  
Call for more information on how you can utilize this resource!

## FOR ANY OF THESE NEEDS:

Call our office at 580-559-5768  
or email us at:

Angel Patterson- [apatterson@ecok.edu](mailto:apatterson@ecok.edu)

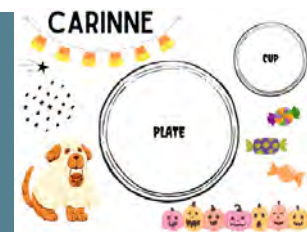
McKenna Morgenthaler- [mckemor@ecok.edu](mailto:mckemor@ecok.edu)

Jessica Colungo- [jcolungo@ecok.edu](mailto:jcolungo@ecok.edu)

Breanna Foster- [bfoster@ecok.edu](mailto:bfoster@ecok.edu)



## PLACEMAT EXAMPLES WE HAVE CREATED





**QRIS**  
Quality Rating and  
Improvement System

**Quality Care for Every Child!**

## THE STARS PROGRAM

**APPLY TO QRIS HERE:** <https://ccmass.dhs.ok.gov/ascend/home>

### Application videos:

*Step 1 (Only required to be completed one time to create a login)*

Application (request for online profile): <https://youtu.be/YBYbmEgwf00>

*Step 2: (Must be completed to request a higher Star level)*

Request for certification: <https://bit.ly/CreateEditCertificationRequests>

### Resources:

Family Child Care Homes: <https://bit.ly/FamilyChildCareHomesQRIS>

Child Care Center-based Programs: <https://bit.ly/ChildCareCentersQRIS>

QRIS Videos (FCCH & CCP): <https://bit.ly/QRISVideoTrainingCECPD>

Family Child Care Home Resource Book

Child Care Program Resource Book



Stars Outreach Specialist	Counties
Bree Dies (580)216-1372 <a href="mailto:Brianne.dies@okdhs.org">Brianne.dies@okdhs.org</a> (NW)	Alfalfa, Beckham, Beaver, Blaine, Caddo [All except Apache, Cyril, Ft. Cobb], Canadian, Cimarron, Creek [Drumright, Bristow], Custer, Dewey, Ellis, Garfield, Grant, Harper, Kay, Kingfisher, Lincoln, Logan, Major, Noble, Oklahoma [73012, 73127, 73142], Pawnee, Payne, Roger Mills, Texas, Woods, Woodward
Georgia Smith (405)301-0097 <a href="mailto:Georgia.smith@okdhs.org">Georgia.smith@okdhs.org</a> (SW)	Atoka, Bryan, Caddo [Apache, Cyril, Ft. Cobb], Carter, Cleveland, Coal, Comanche, Cotton, Garvin, Grady, Greer, Harmon, Jackson, Jefferson, Johnston, Kiowa, Love, Marshall, McClain, Murray, Pontotoc, Pottawatomie [Shawnee, Tecumseh], Stephens, Tillman, Washita
Amanda Rietz (405)837-9199 <a href="mailto:Amanda.rietz@okdhs.org">Amanda.rietz@okdhs.org</a> (OKC Metro)	Oklahoma [All except 73012, 73127, 73142]
Jennifer Mallery (918)348-6516 <a href="mailto:Jennifer.mallery@okdhs.org">Jennifer.mallery@okdhs.org</a> (NE)	Craig, Delaware, Mayes, Nowata, Ottawa, Rogers, Tulsa [All except 74008, 74070, 74073, 74107, 74126, 74132, 74137], Wagoner
Amanda Hatcher (405)567-5462 <a href="mailto:Amanda.hatcher@okdhs.org">Amanda.hatcher@okdhs.org</a> (SE)	Adair, Cherokee, Choctaw, Creek [All except Drumright, Bristow], Haskell, Hughes, Latimer, Leflore, McCurtain, McIntosh, Muskogee, Okfuskee, Okmulgee, Osage, Pittsburg, Pottawatomie [All except Shawnee, Tecumseh], Pushmataha, Seminole, Sequoyah, Tulsa [74008, 74070, 74073, 74107, 74126, 74132, 74137], Washington

# OKLAHOMA WARMLINE

## (BECAUSE KIDS DON'T COME WITH INSTRUCTIONS)

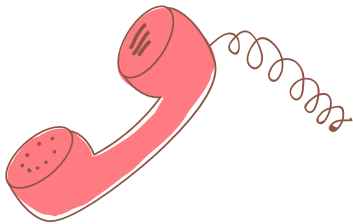
The Warmline for Oklahoma Child Care Providers offers free telephone consultations, M-F, 8 AM – 6 PM to child care providers on numerous topics of concern. Consultants refer providers to appropriate services and resources within their communities. If you are a child care provider and would like to request updated posters for your home or center, please contact us.

A consultant can help clarify a problem, provide information, help generate ideas and solutions, offer guidance on developmentally appropriate practices, provide referrals to meet individual needs and requests, direct providers to relevant resources to assist with a concern, and provide follow-up when needed.

Call: 1 (888) 574-5437 (KIDS)

Email your questions to: [warmline@health.ok.gov](mailto:warmline@health.ok.gov)

Go online: <http://warmline.health.ok.gov/>



## SCHOLARS FOR EXCELLENCE PROGRAM

The Scholars program promotes scholar success by empowering scholars to take responsibility for achieving their academic and professional goals.

Scholar coordinators:

- Provide support services and technical assistance.
- Help scholars navigate through the entire process, from the application for the scholarship, admissions and financial aid to credential completion.
- Provide academic and career advisement to ensure scholars' success.
- Provide guidance in exploring scholars' credential options to ensure compatibility with educational and professional goals.

For more information or assistance, contact the scholar coordinator in your area:

- Carl Albert State College, Poteau, Idabel and Sallisaw, Verna Corley, 918.647.1252
- Connors State College, Muskogee, Bailey Maxey, 405.650.0090
- Eastern Oklahoma State College, Wilburton, Bailey Maxey, 405.650.0090
- Murray State College, Tishomingo, Heather McLean, 580.387.7412
- Northeastern Oklahoma A&M College, Miami, Bailey Maxey, 405.650.0090
- Northern Oklahoma College, Tonkawa, Enid and Stillwater, Jayme Orgain, Scholar Coordinator, 405.762.9141, or Courtney Mikolajczyk, Scholarship Support Specialist, 405.372.2404
- Oklahoma City Community College, Quen Wilczek, [qwilczek@osrhe.edu](mailto:qwilczek@osrhe.edu)
- Oklahoma State University – Oklahoma City, Jeff Rosson, 405.945.9168 or 800.560.4099
- Redlands Community College, El Reno, Karen Huett, 405.422.1286
- Rose State College, Midwest City, Jennifer Bachhofer, 405.733.7449
- Seminole State College, Seminole, Lynetta Robins, 405.382.9751
- Tulsa Community College, Tulsa, Melissa Caviness, Scholar Coordinator, 918.595.8024, or Cacey Cottom, Scholarship Support Specialist, 918.595.8280
- Western Oklahoma State College, Altus, Alejandra Tillman, 580.477.7892
- Career Technology Centers (Pathway), Bailey Maxey, 405.650.0090



# CONTACTS & RESOURCES

Center for Early Childhood Professional Development (CECPD)  
1 (888) 446-7608      [www.cecpd.org](http://www.cecpd.org)

Locating Quality Child Care -  
1 (800) 438-0008

Oklahoma DHS Child Care Services -  
1 (800) 347-2276  
[www.okdhs.org/childcare](http://www.okdhs.org/childcare)

Oklahoma Professional Development Registry  
[www.okregistry.org](http://www.okregistry.org)

Child Care Services Offices  
405-522-5050

Office of Background Investigations  
1 (800) 347-2276

QRIS (Stars)  
Amanda Hatcher  
[Amanda.Hatcher@okdhs.org](mailto:Amanda.Hatcher@okdhs.org)  
Carter, Johnston, Love, Marshall, Okfuskee,  
Pontotoc, Pottawatomie, Seminole Counties

Amanda Rietz  
[Amanda.Rietz@okdhs.org](mailto:Amanda.Rietz@okdhs.org)  
Garvin, McClain, Murray Counties

Scholars for Excellence in Child Care  
[www.okhighered.org/scholars](http://www.okhighered.org/scholars)  
Statewide contact – Bailey Maxey  
1 (866) 343-3881 or (405) 225-9395

Murray St College—Heather McLean  
(580) 387-7412

Seminole St College—Lynetta Robins  
(405) 382-9751

Pathway to CDA –  
Bailey Maxey - 1 (866) 343-3881

Warmline- 1 (888) 574-5437 (KIDS)  
Free telephone consultation for child care providers covers behavioral health related topics.  
<http://warmline.health.ok.gov/>



## CALL CENTER

The Child Care Services call center is open Monday-Friday, 9 am to 4 p.m. The phone number is (405) 521-6177.

Email: [ChildCareGrantsHelp@okdhs.org](mailto:ChildCareGrantsHelp@okdhs.org)

